

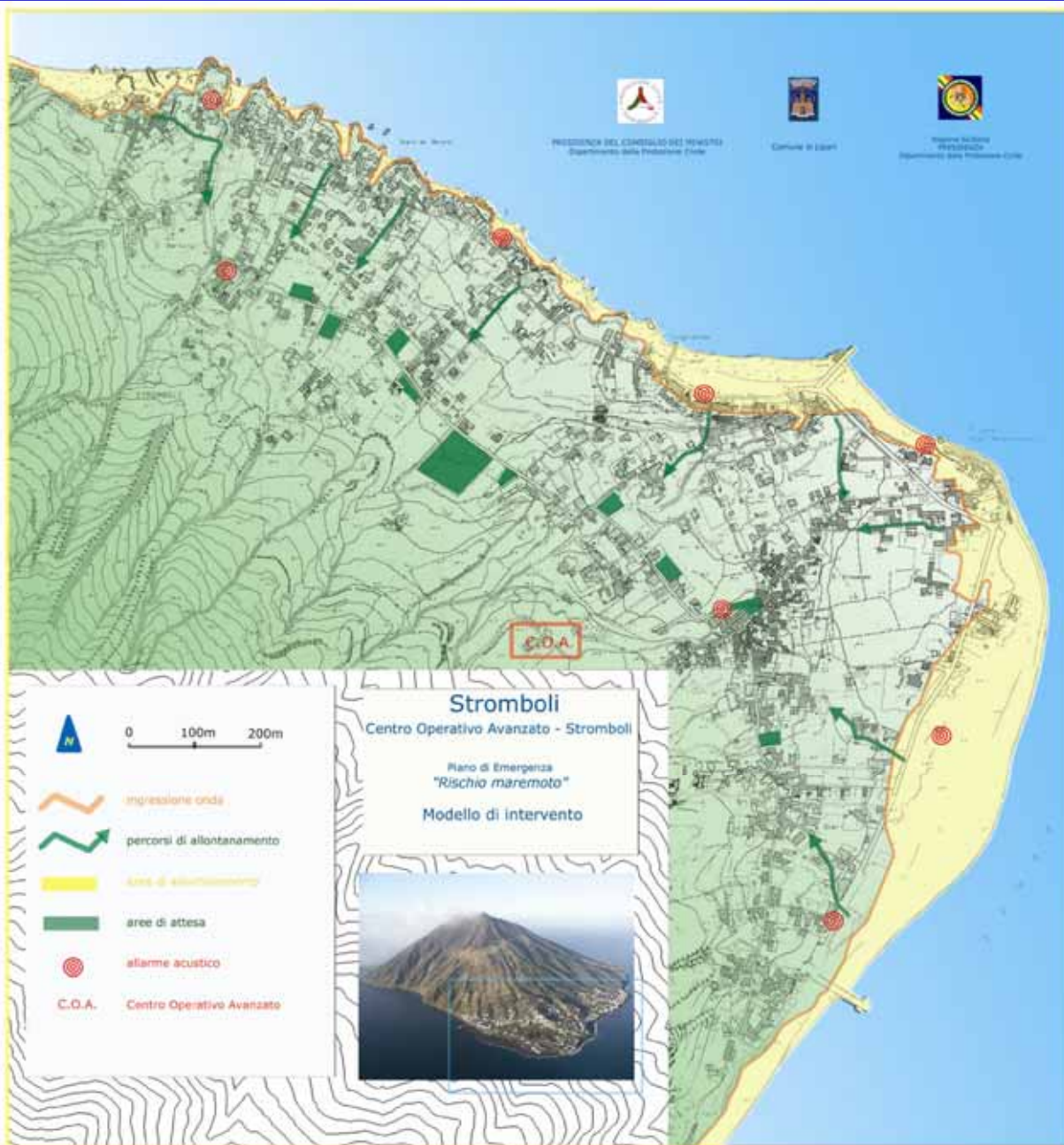
5 Aprile 2003, ore 9.12



Piano d'emergenza da rischio maremoto: I fase



Piano d'emergenza da rischio maremoto



area di
allontanamento
temporaneo

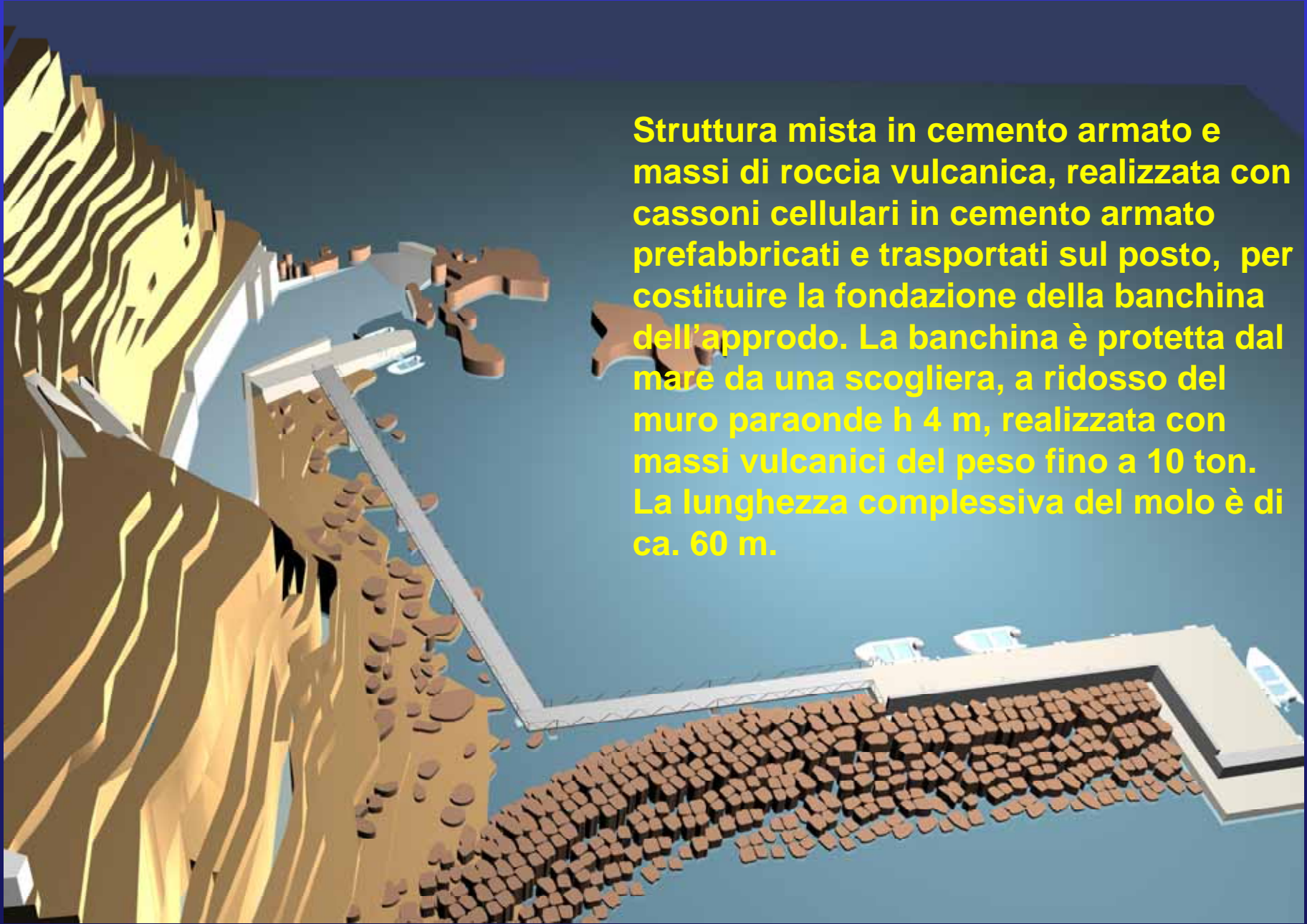
vie di fuga

aree di attesa

sirene

Il molo di Ginostra: il progetto

Struttura mista in cemento armato e massi di roccia vulcanica, realizzata con cassoni cellulari in cemento armato prefabbricati e trasportati sul posto, per costituire la fondazione della banchina dell'approdo. La banchina è protetta dal mare da una scogliera, a ridosso del muro paraonde h 4 m, realizzata con massi vulcanici del peso fino a 10 ton. La lunghezza complessiva del molo è di ca. 60 m.

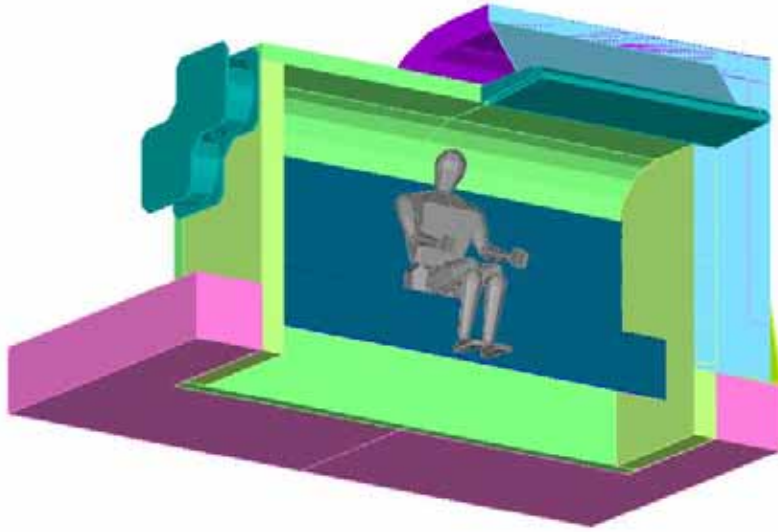


Il nuovo molo a Ginostra



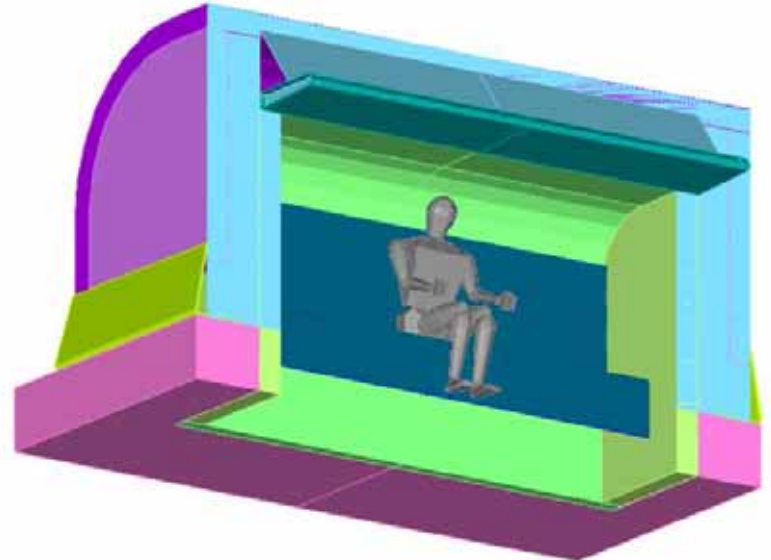
shelter

Università della Basilicata



La realizzazione di shelter di protezione per il personale scientifico e per gli escursionisti consentirà un'ulteriore diminuzione della esposizione, ma non potrà mai permettere l'annullamento del rischio.

Realizzati con tecniche di ingegneria antisismica (sistemi dissipativi).
Dimensioni ridotte e basso impatto ambientale.

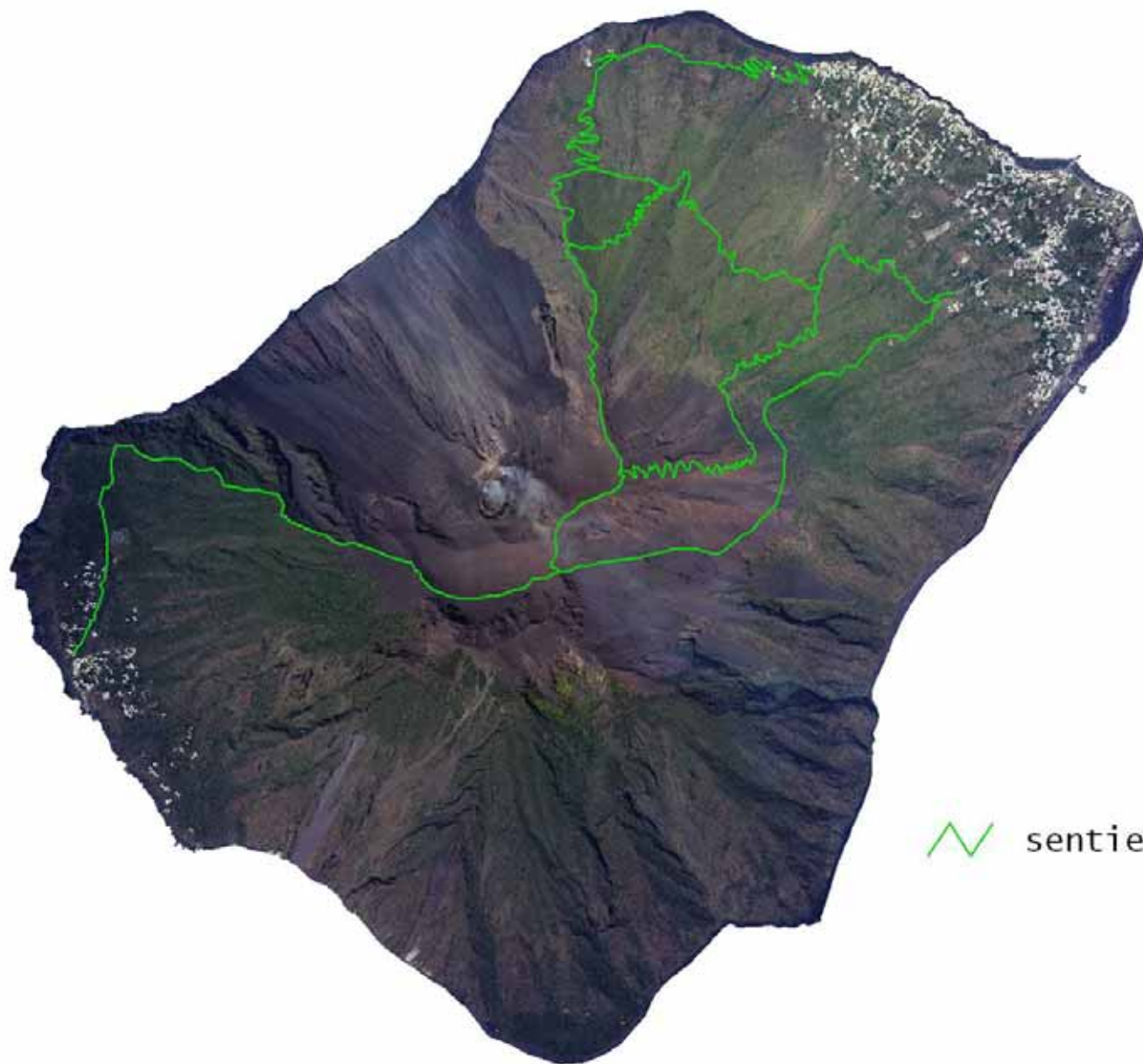


La struttura sarà in grado di resistere all'urto di un masso avente diametro di 0,50 m proveniente da una traiettoria di 400 m, in grado di assorbire l'energia d'urto mediante adeguati dispositivi dissipativi

Ogni shelter sarà in grado di proteggere circa 10 persone dalla caduta di massi. La struttura è in grado di resistere all'azione degli agenti atmosferici e chimici aggressivi (SO_2 , H_2S).



Prove dinamiche, settembre 2004



sentieri

I lavori sono stati eseguiti dall'Azienda regionale delle foreste demaniali della Regione Siciliana, sotto la supervisione diretta del DPC. Inoltre, essendo l'Isola di Stromboli riserva naturale, le opere sono state eseguite nel rispetto delle normative esistenti in materia di interventi in aree protette, secondo tecniche di ingegneria naturalistica.



Ordinanza sindacale
n.11/05 del 24 marzo
2005





© PIRELLA GÖTTSCHE LOWE, 2015. Stromboli (Stromboli) Ordinanza n. 11/05. Progettato GÖTTSCHE LOWE, 2015.



STROMBOLI is an active volcano that reaches an altitude of over 3,040 feet. Following the trails that wind along its slopes, you can watch spectacular volcanic displays, immerse yourself in picturesque natural environments, and enjoy beautiful panoramic scenery.

This brochure gives you the information necessary to learn about the volcano and its risks, and enjoy this experience while respecting the environment.

The paragraphs about the rules for behavior on the island and the excursion activity contain particularly important practical information.



*Presidenza del Consiglio dei Ministri
Dipartimento della Protezione Civile*



Comune di Lipari

Rules for Behavior

on the island of Stromboli

The Department of Civil Defense, in agreement with local Authorities, has set out a series of rules that provide the island's inhabitants and visitors with practical indications for behavior to follow in case of events that can be dangerous.

LANDSLIDES ALONG THE SCIARA DEL FUOCO.

The Sciara del Fuoco is the slope of the volcano where there are regular events in which boulders and stones roll down hill, and where larger landslides can also develop. For this reason, boating and swimming are prohibited within 440 yards of the coast in the entire area of the sea facing the Sciara del Fuoco.

PAROXYSMAL EXPLOSIONS.

Stromboli's paroxysms are accompanied by sharp and loud explosions similar to cannon shots, and by the formation of a large dark cloud.

These events do not last long (from a few seconds to minutes). Moving away from the area by running along the paths shifted by the volcano can provoke even greater damage. Most of the accidents in the past have taken place precisely due to people falling while fleeing hastily.

When these events – which can also cause fires in the vegetation – take place, it is thus appropriate to:

- if you are at the top of the volcano, take shelter immediately, if possible, in a covered place. If there is no shelter available, stay calm and follow the instructions of the guide;
- if you are in the area of Vallonazzo or of the Schicciolo, move away from the floor of the valley towards raised areas, due to the possible descent of landslides of hot material;
- if you are near the coast, move towards the inner part of the island, following the paths indicated by the relevant signs situated throughout the island;
- if you are at sea, move away from the island, out to sea.

TSUNAMIS

Stromboli's tsunamis are generally preceded by landslides from the Sciara del Fuoco or paroxysmal explosions. The danger of a tsunami being triggered leads to the implementation of procedures for alerting the population which may also include the activation of sirens installed in the inhabited areas of Stromboli and Ginostra. In any case, even if the alarm is not broadcasted, if you observe a paroxysmal explosion, a large landslide, or the withdrawal of the sea from the coast, you need to:

- immediately move away from the coastal area (out to sea if you are on a boat) following the paths indicated in the relevant signs situated throughout the island;
- reach the waiting areas.

The beach that goes from Piscità towards the Sciara del Fuoco only has tsunami escape paths on the first part of the beach, while the more western part lacks such paths, due to its natural configuration. This last part of the beach is also exposed to phenomenon of falling boulders.

EXCURSION ACTIVITY

Excursion activity is regulated according to criteria based on the level of danger of the volcano and respect for the environment. In order to satisfy heightened demand for being able to use the island's mountain environment, the

Department of Civil Defense and the State Forest Agency of the Sicily Region have organized a network of trails, adopting naturalistic engineering techniques and respecting the laws regarding interventions in protected areas. Access to the trails is free below 1,300 ft above sea level, and regulated at higher altitudes, where you must be accompanied by authorized volcanological guides.

The climb to the volcano is a mountain excursion that can be tiresome due to the steep slopes, the height of the climb and the heat, and thus it should be undertaken only by people in good physical condition. To go on such an excursion, you need to be equipped with adequate clothes and shoes, water and supplies. It is also important to never go off the trails and not to pick protected plant species.

EXCURSIONS ACCOMPANIED BY GUIDES

Based on the meteorological and volcano conditions, the guide makes the final decision as to undertaking the excursion. The guide can accompany individual or group excursions, that are in any case limited to a small number of people.

Before the beginning of the excursion, the guide supplies the COA and the Carabinieri Station in Stromboli with a list of people participating, the path to be taken, the time of departure and the expected time of return. The successful return from the excursion is also communicated.

CONTROLS

The personnel of the Financial Guard, the Carabinieri, the Forest Guards and the Local Police all have the task of carrying out controls along the volcano access paths and trails, in order to guarantee respect for the rules.

If single excursionists or groups of people take excursions above 1,300 ft without an authorized guide, they will be forced to turn back in order to complete the necessary procedures before beginning the excursion again.

CHANGES IN THE RULES

Should the volcanic conditions significantly change, the above mentioned rules may vary.

Such decisions will be communicated and publicized in the media, on the Department's web site www.protezionecivile.it and in the local area.

Informational notes valid since March 26, 2005 according to Municipal Ordinanza n. 11/05.

TO KNOW MORE

Visitors who want to know more about what has been summarily presented here, can contact:

- the STROMBOLI COA
- the STROMBOLI INGV CENTER
- the offices of the ASSOCIATIONS OF STROMBOLI VOLCANOLOGY GUIDES

and can visit the web site www.protezionecivile.it

WELCOME TO THE MOST BEAUTIFUL ACTIVE VOLCANO IN THE WORLD