

XCHANGE PROGRAM

University of L'Aquila & Shibaura Institute of Technology

IN JAPAN

2016





OUTLINE

Theme

Building a hotel for long-term stays in the historical area of Kawagoe

Class name

「イタリア建築実習A」

Period

17/02/2016-16/03/2016

Objective

Through the exchange class of University of L'Aquila in Italy and Shibaura Institute of Technology, we study the method of the building design from the international field of vision.

In addition, not only the project of the building design, we attend lectures and take field trips for observation of architecture. We get more knowledge and comprehension for cultures of architecture each other.

Implementation location

Shibaura Institute of Technology Toyosu campus in Tokyo

Supervisors

Prof. R. CONTINENZA
Prof. A. BENEDETTI
Prof. Y.ITO
Associate Prof. H.SATO
Prof. Y.SAKURAI

Special lecture

■Prof. R. CONTINENZA
“Historical center reconstruction methods comparison in two study cases”
■Mr. Nezu and Prof. Sakurai
“The law and rule of INN in Japan”

Feb

2

17
Arrive
in Narita

18


19 20 21
Trip to Kyoto and Osaka



22
Guidance
&
Welcom party

23
Survey
of Kawagoe

24

25
Special lecture
Mr. Nezu
Prof. Sakurai

26 27 28
Tokyo Tour



29
1st
presentation



SCHEDULE



1

2

3

4


5

6
Yokohama
Kamakura Tour

7
2nd
presentation

8

9
Special lecture
Prof. R.
CONTINENZA

10

11

12


13

14
Final
presentation
&
farewell party

15
Cleaning
the atelier

16
Departure
from Narita
to Rome



3

Mar

ABOUT KAWAGOE



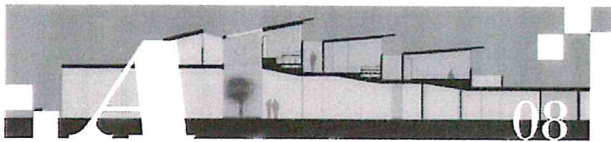
Kawagoe is a castle town in Saitama near Tokyo, and many tourists more than 6 million a year visit the city.

There is a historic cityscape of traditional Kuradukuri buildings, Kawagoe Castle, religious buildings such as Kita-in Temple and Hikawa Shrine. In addition, the festival of October is famous. It is an eminent sightseeing spot in the metropolitan area.

However, the tourist seldom stays at this town because it is possible to get and back in a day from Tokyo. So it is expected that a tourist, particularly a foreign tourist, stays at the hotel for plural days, in order is to enjoy the attractive buildings and cityscape, hot spring of this town. Therefore the theme is to build a hotel for long-term stays in the historic area of Kawagoe.

Approval of the project:

Kawagoe City Office



Alba Fagnani Marta Pezzi
Kana Moriya Motoki Kawabe
Yuto Kimural



Alessia Fericola Marzia Carissimi
Aoi Goto Go Sugiura



Anastasia Celli Micaela Mercuri
Ryousuke Koizumi Yuki Kitaura



Debora D'onofrio Paolo Di Marzio
Ken Nishimaru Mai Sasaki
Makiko Tanaka



Ilaria Di Pancrazio Sara Mucci
Koharu Ono Rrosuke Toyama
Ryo Matsuzaka

WORKS



Marta Pezzi



Alba Fagnani



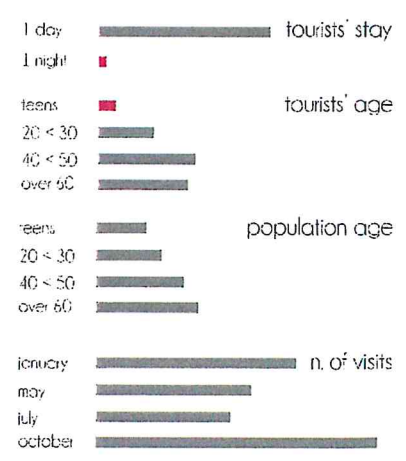
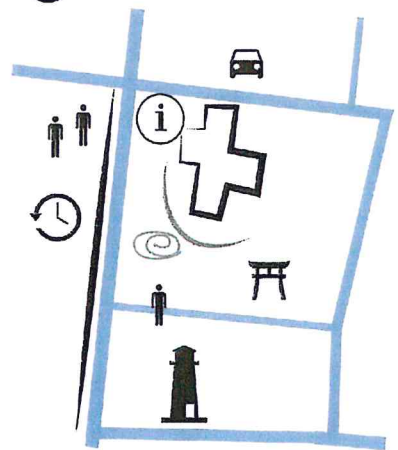
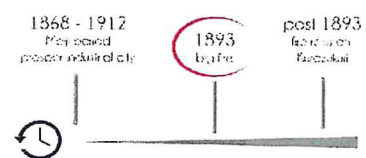
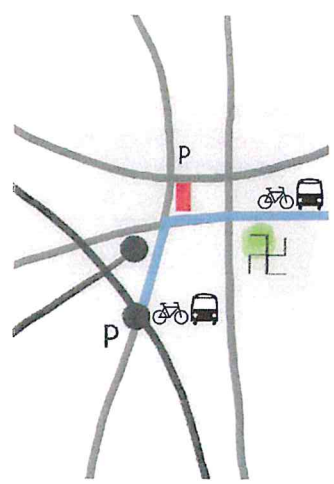
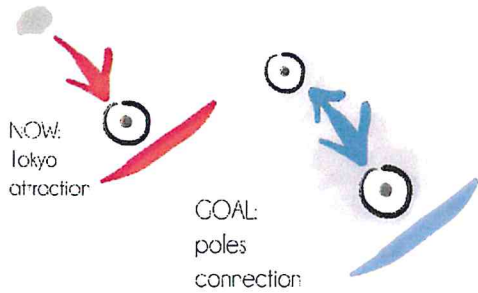
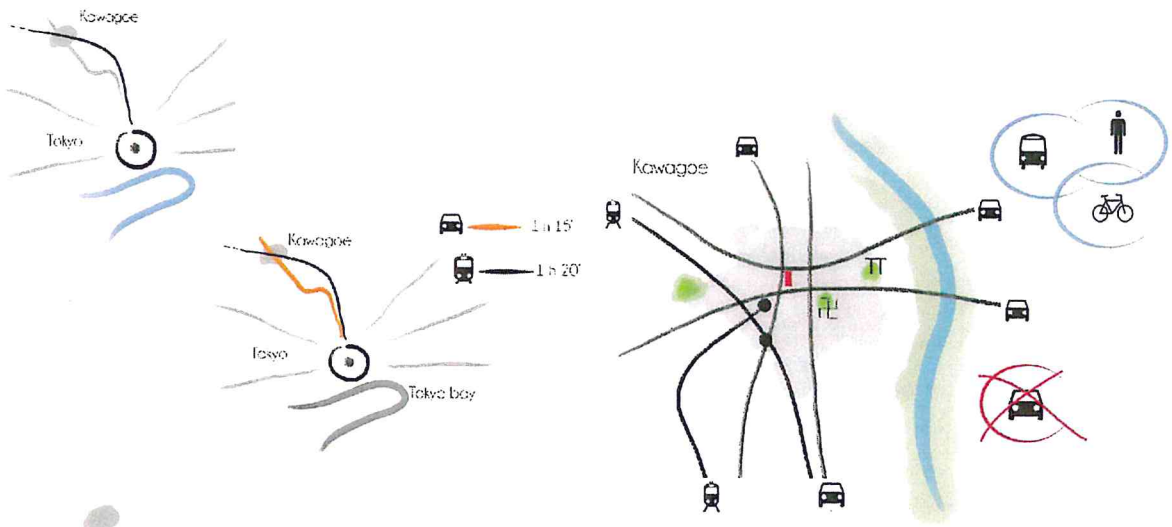
Kana Moriya



Hiroto Kimura

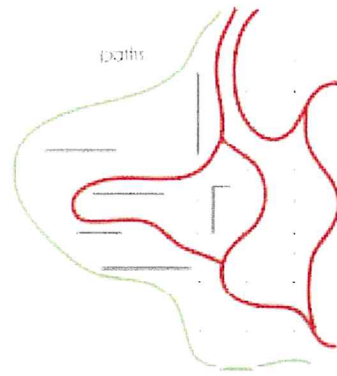
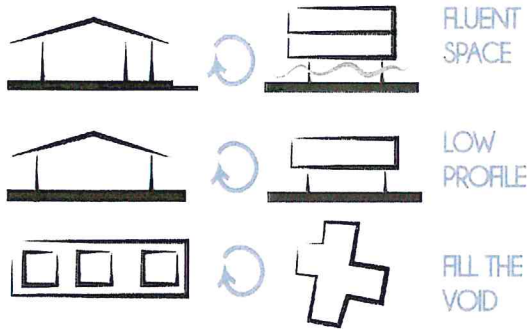


Motoki Kawabe



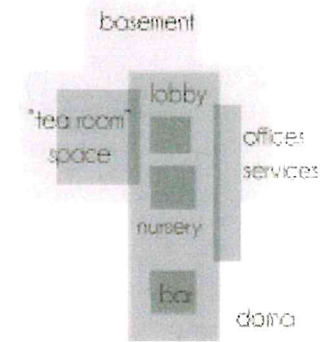
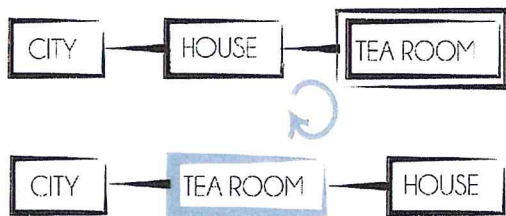
TURN ON

using elements of tradition in an innovative way



THE "TEA ROOM" CONCEPT

a fluent gradient of shared space



functions

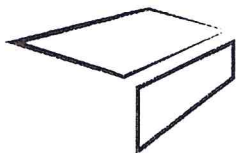
THE CONCEPTION OF SPACE

focusing on a different idea of space

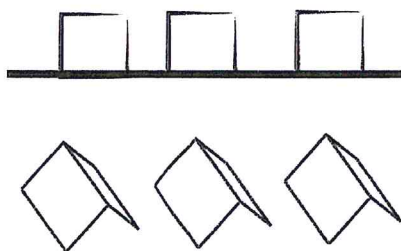


tatami modular 90 x 180 cm

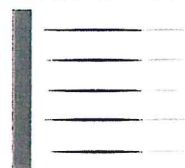
WORKING WITH SURFACES



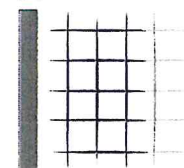
THE ROOF



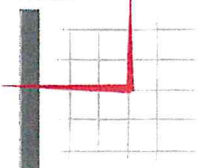
historical front = rule



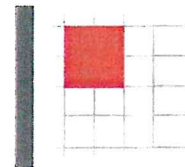
grid



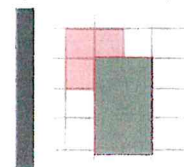
access



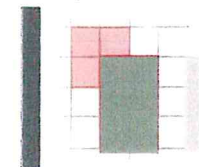
project core



gradient derived space

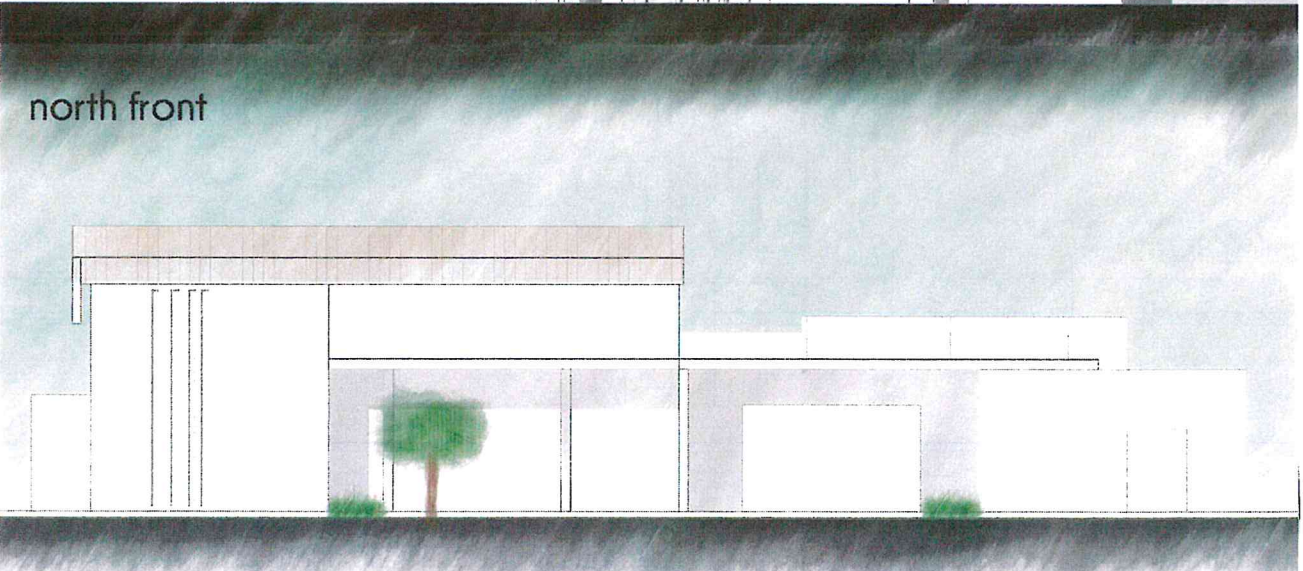
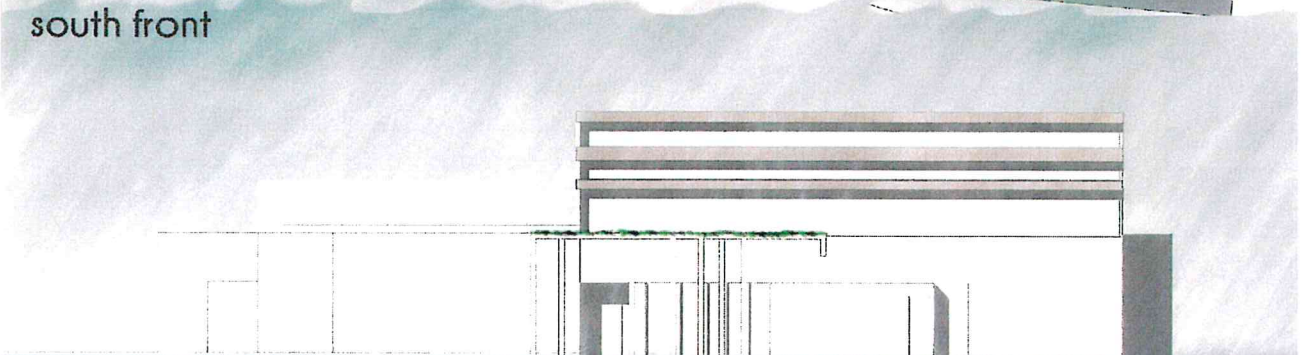
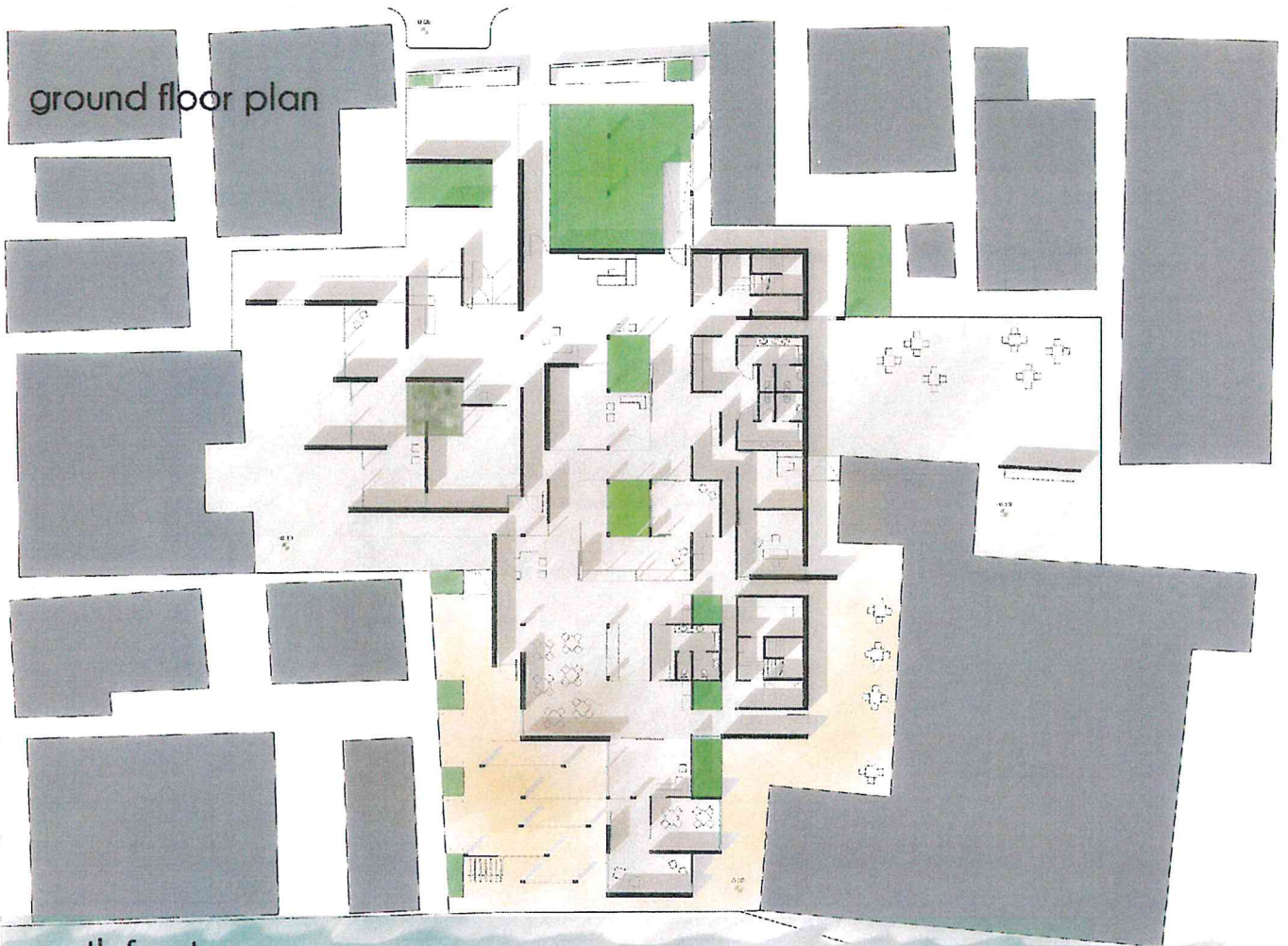


closing volume

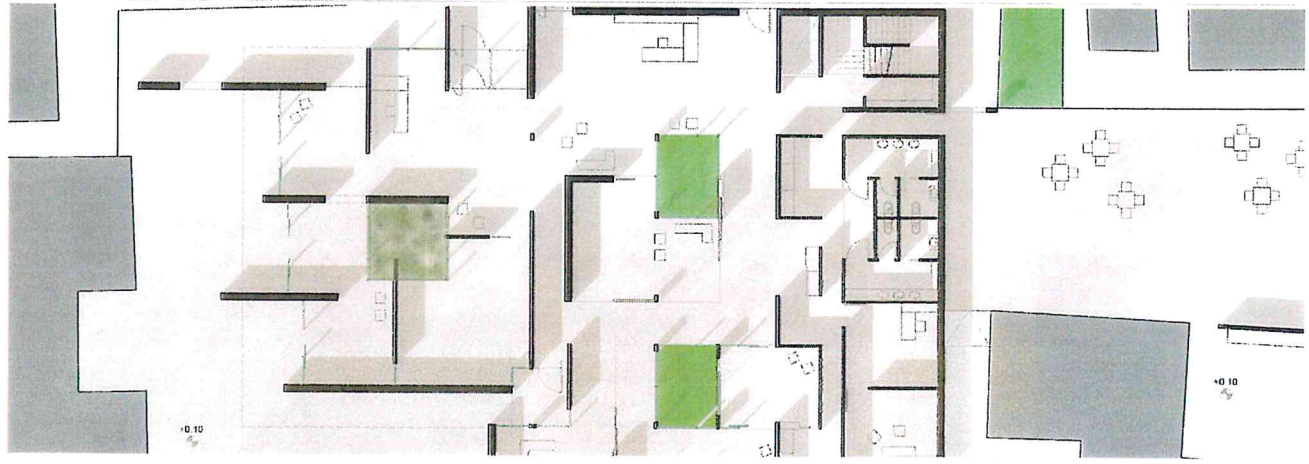


■ walls

■ pillars

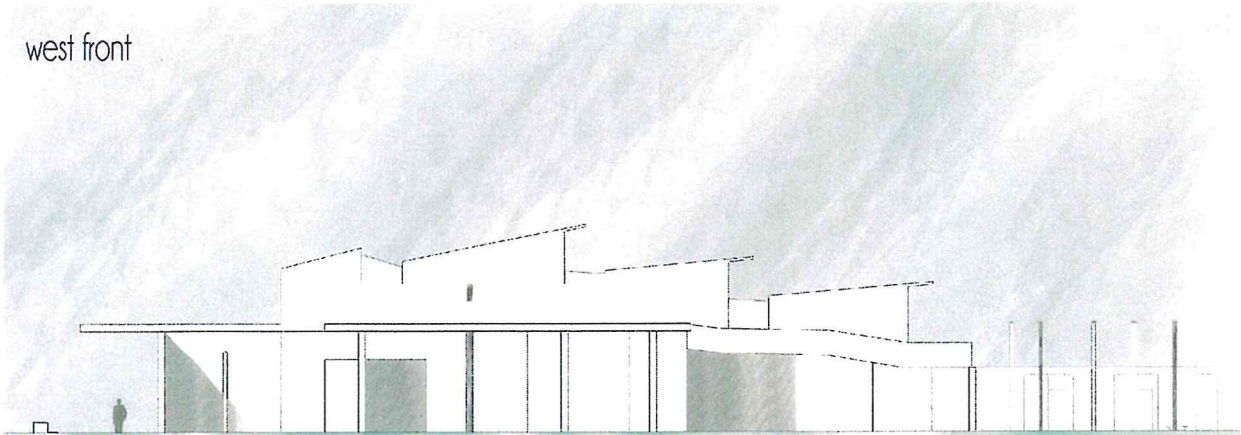


cross section



first floor plan

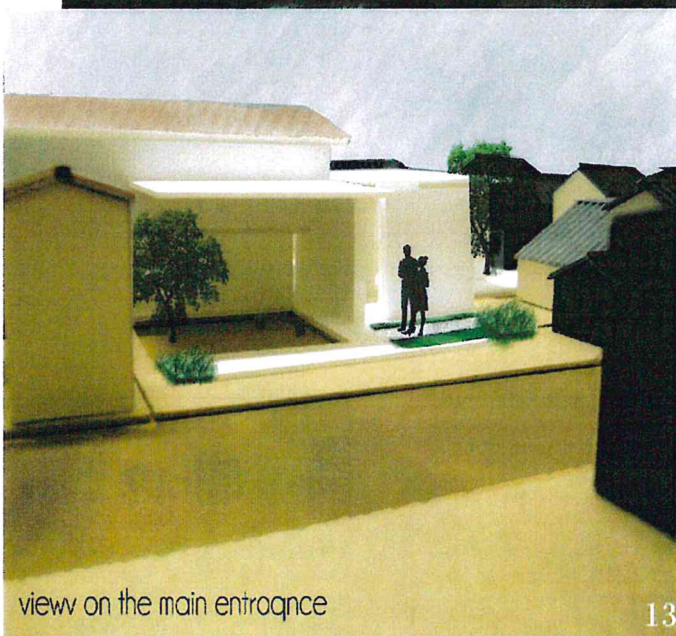
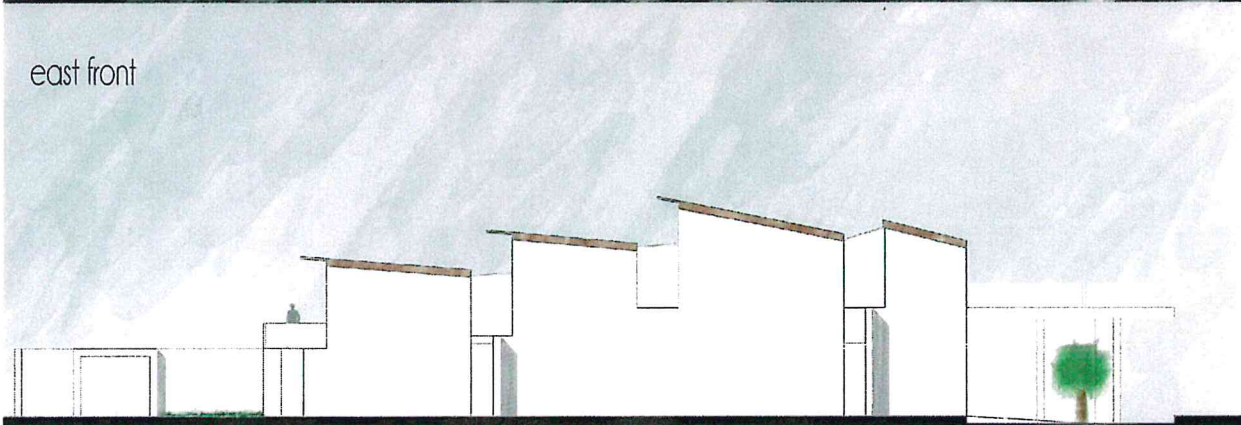
west front



longitudinal section



east front



view on the main entrance



view from the top



GROUP B

Roof

Kawagoe city

TOWER

TrADITION

Atmosphere



Keep people in Kawagoe

HOW?

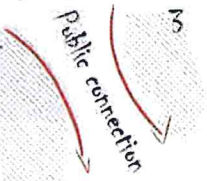
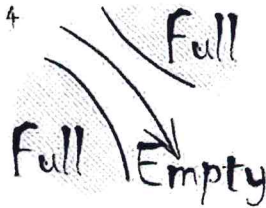
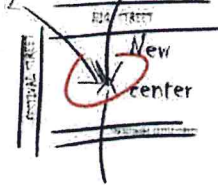
- SHOPPING AREA
- MARKET AREA
- STREET FOOD AREA
- EVENTS AREA
- EXPOSITION GALLERY
- GREEN AREA -> EATING, RELAXING
- MEETING POINT
- KEEP THE FESTIVAL INSIDE
- PLAZA



Go
Marzia

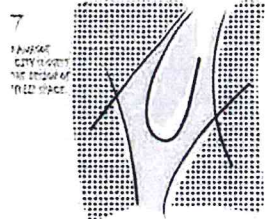
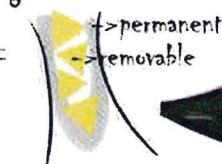


Street connection concept



the 3 streets design the shape

6 COVERAGE



FINAL DESIGN



In ou

Protected open-covered space
IDEA

Connection
Alessia

Aoi

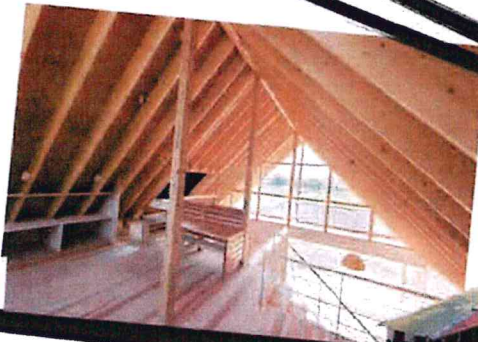
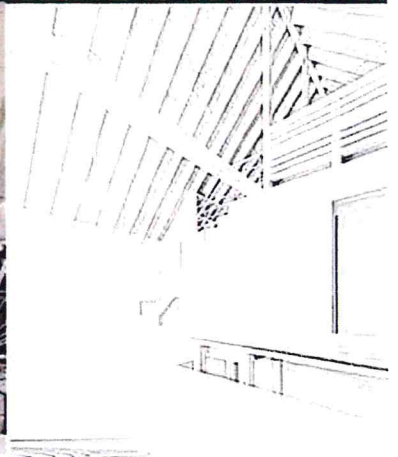
InNOVation

Floating flux

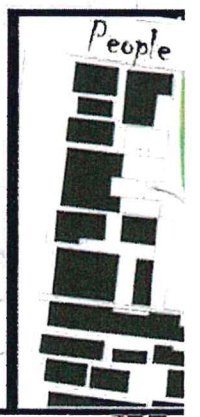
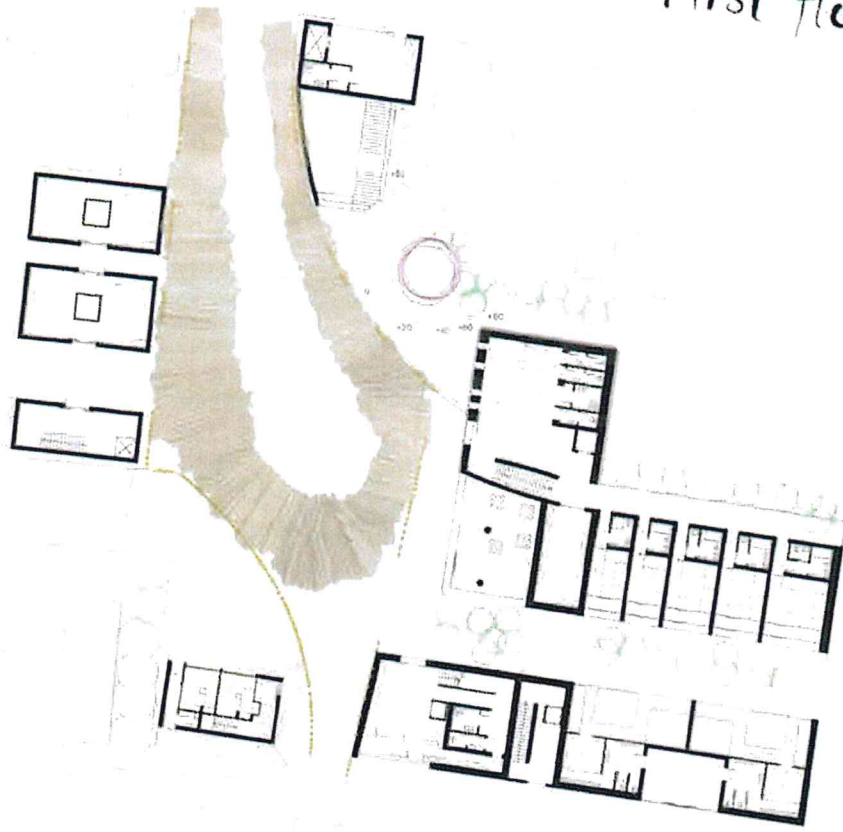
Kawagoe festival

Connection

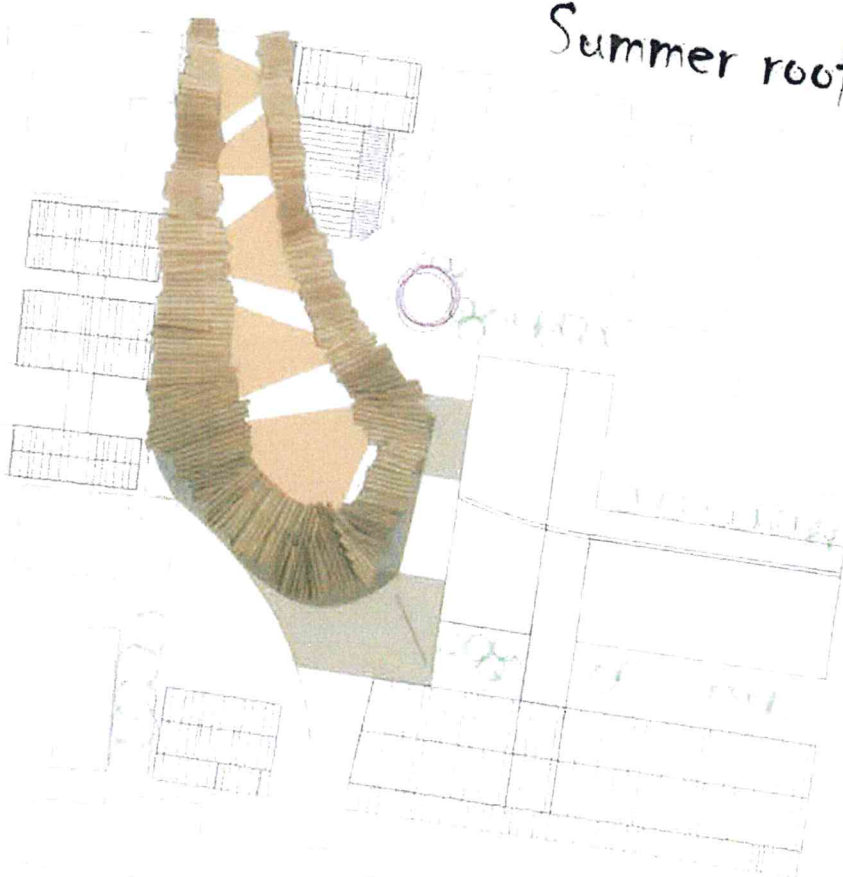
our project



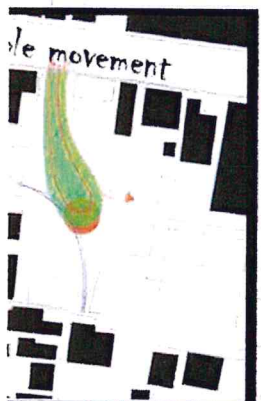
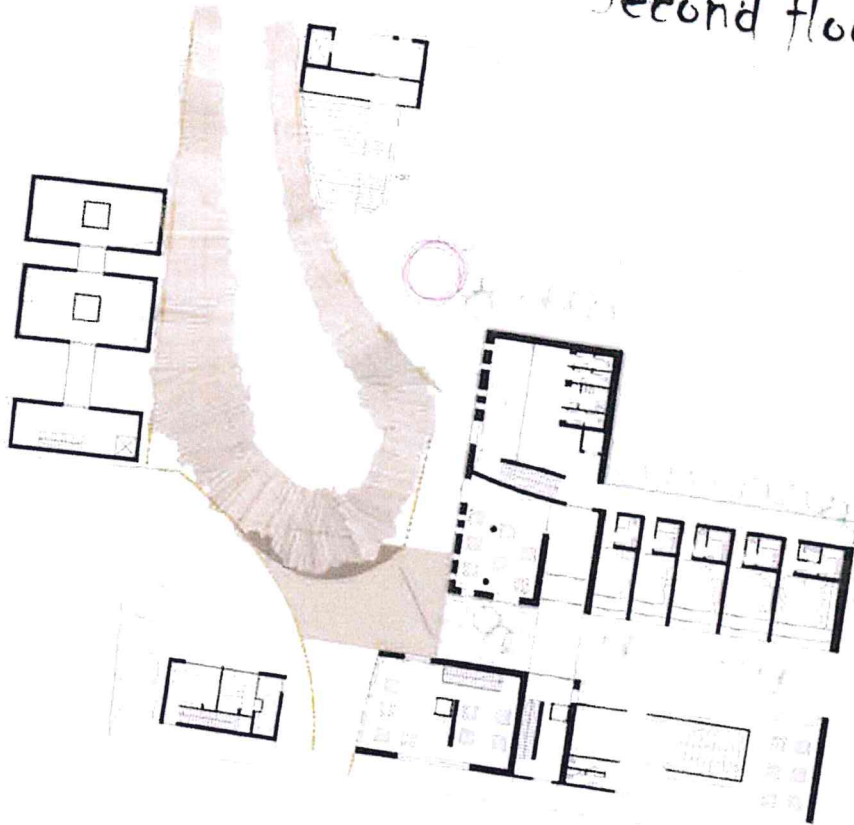
First floor plan



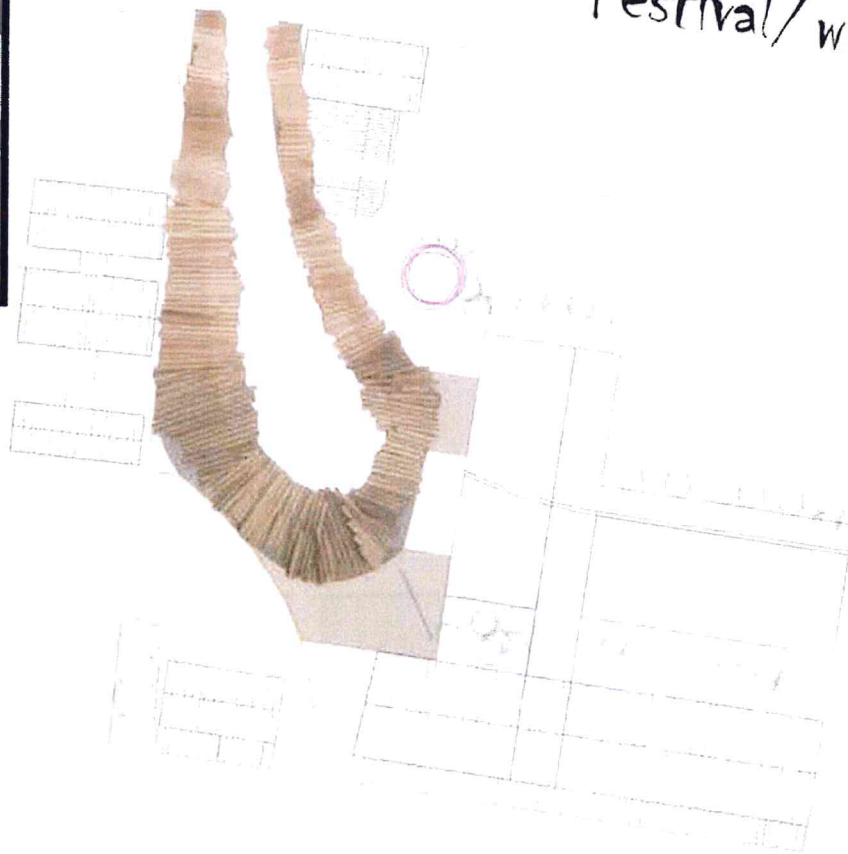
Summer roof



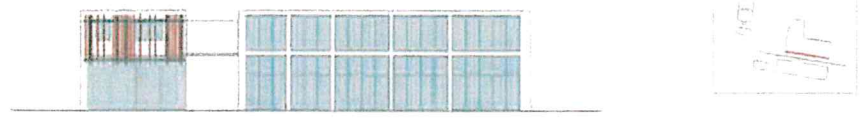
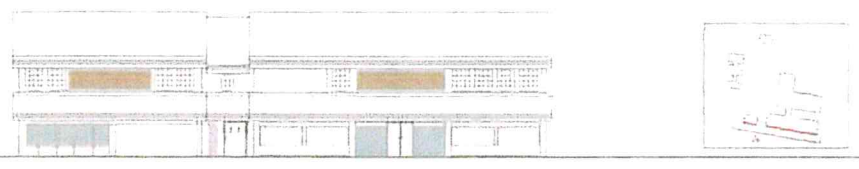
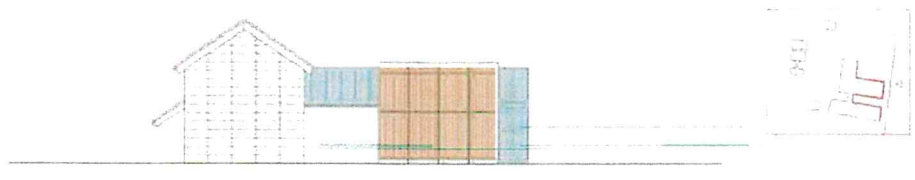
Second floor plan



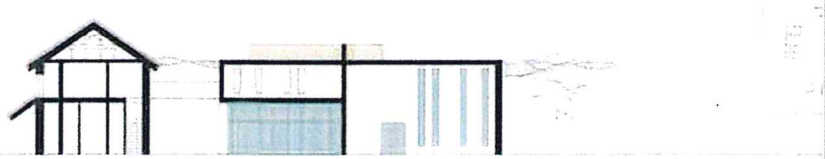
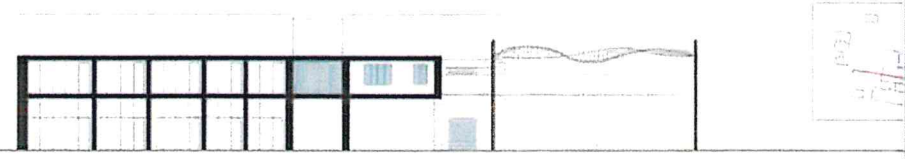
Festival/winter roof



Plans



Elevations

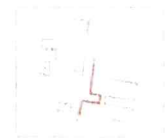
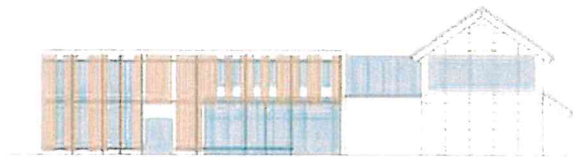
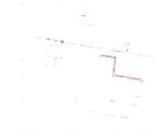


Marzia Carissimi, Alessia Ferricola, Gow Sugiura, Aoi Goto

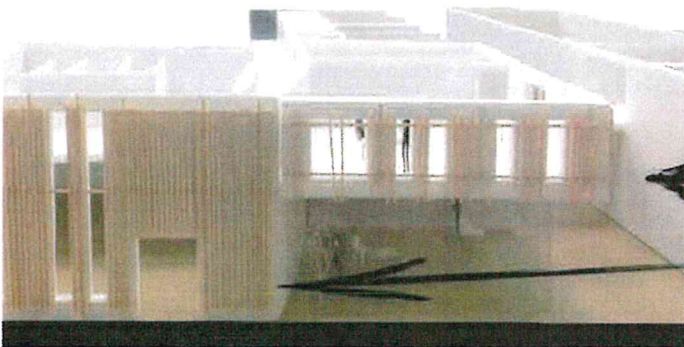
Sections



floating
lux



Elevations

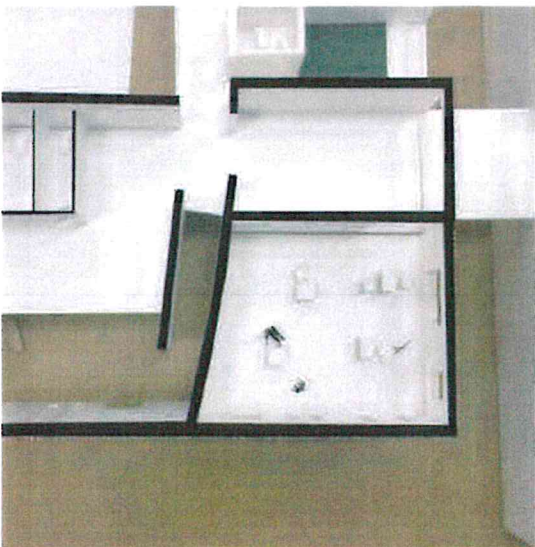


Visual sections

Breakfast room

Hall

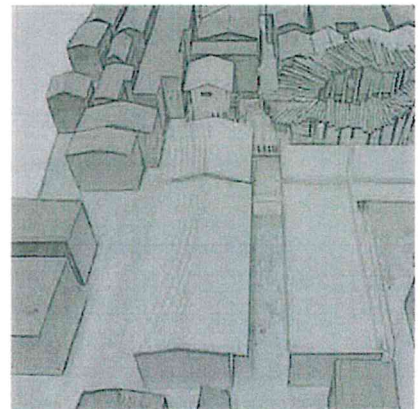
Tatami rooms

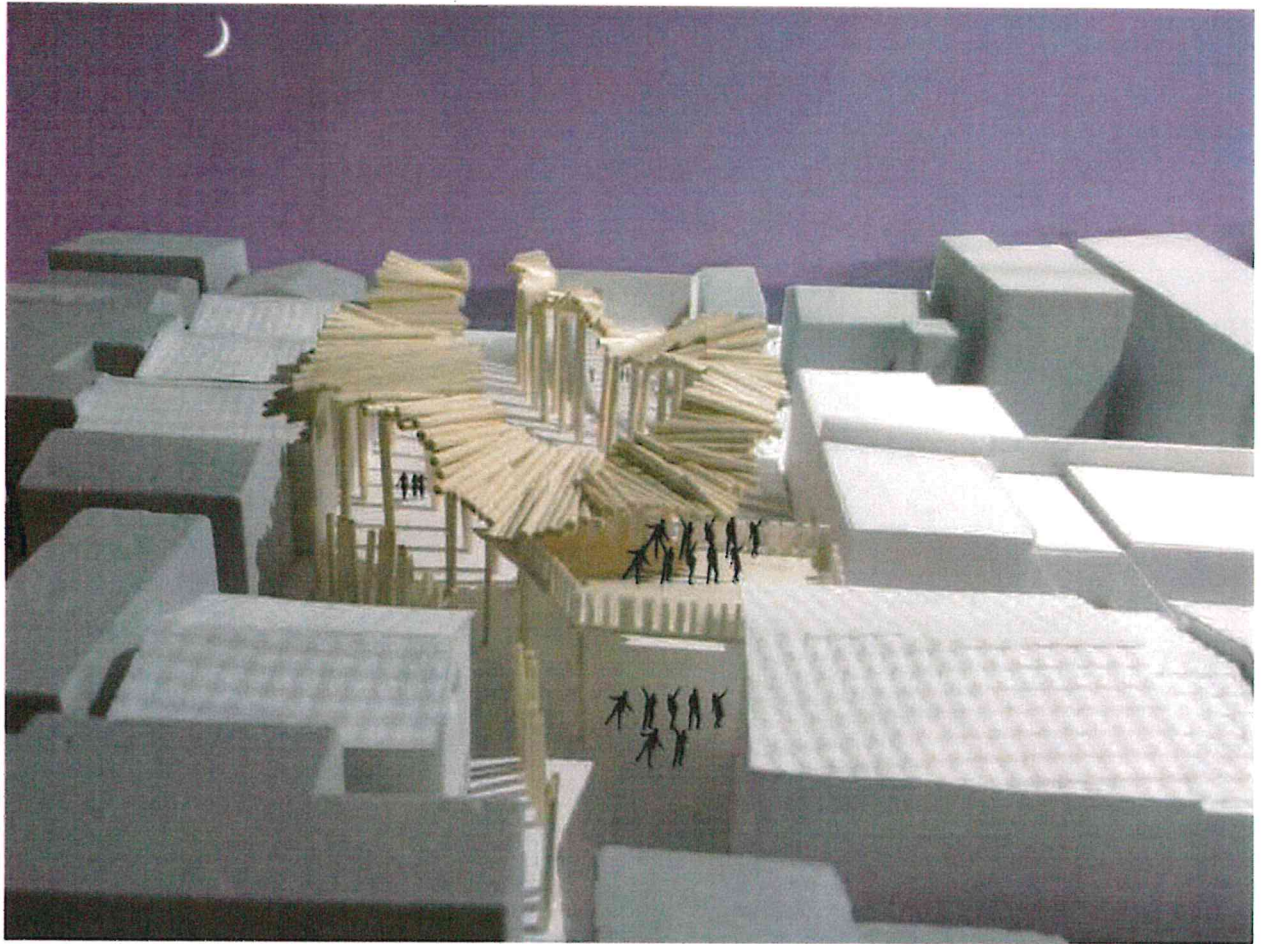




Renderings

- On the terrace
- Night terrace view
- from the big street
- roofs games





GROUP C ~Team Gangi-dori~



Ryosuke Koizumi



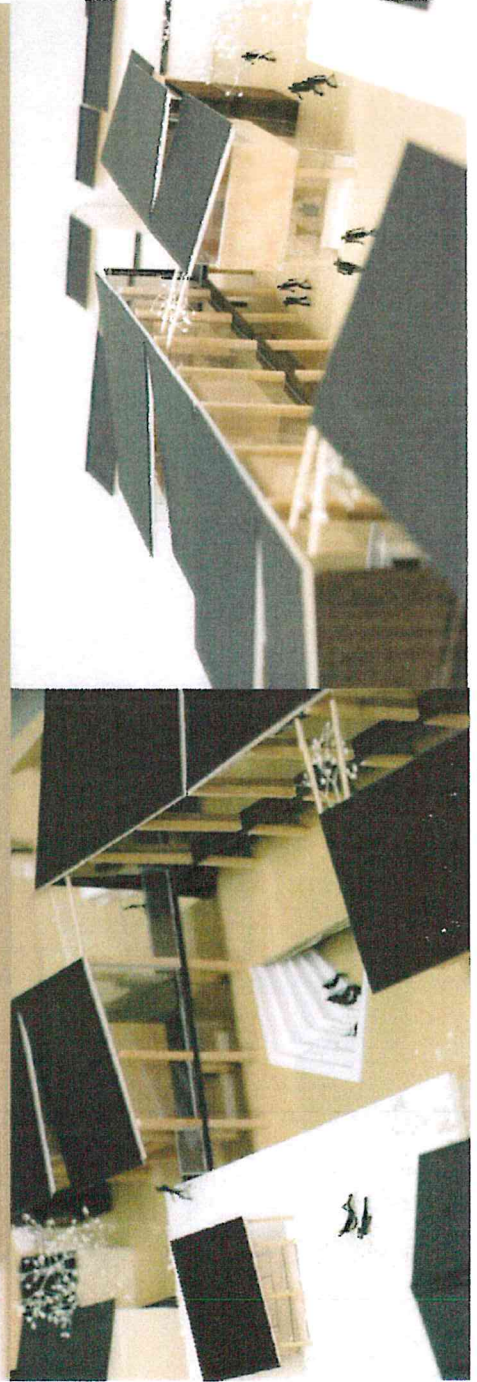
Yuki Kitaura



Anastasia Celli



Micaela Mercuri



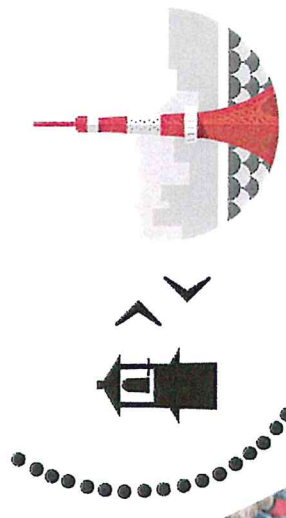
"From the spoon to the City"

When the Italian Architect, Enrico Rogers famously declared that he wanted to design everything from "a spoon to a city," he articulated the desire of many architects to design from the territorial scale all the objects in every single detail. It seems essential to link our project in connection with urban environment.

THE SOUND OF THE CITY

DIFFERENT SCALES PROJECT INTERCONNECTED

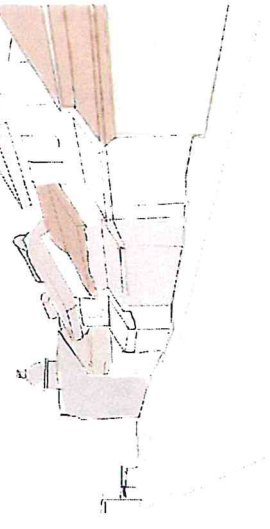
Territorial overview



Local overview



District overview

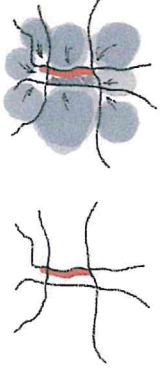


Cluster in place is a new element compared to those achieved in the past. It is a new Cluster because it brings together and connects to an existing one through which it is possible to connect the urban fabric to the urban fabric. This kind of urban structure can be interpreted with the method of the cluster, which is a way to organize the urban fabric. It is a way to territorialize the urban fabric.



MELODY

FAVORITE SITES CONNECTION AMONG ALL THE PARTS OF THE TOWN



Cluster and harmony will converge in the melody. Melody is our social compass to guide modern activities for local people and rural and its visible through a urban scale. (District overview)

HARMONY

Harmony addition to the local overview and with cluster can create the melody itself essential to understand the nature of the site and the needs of the modern and the future.

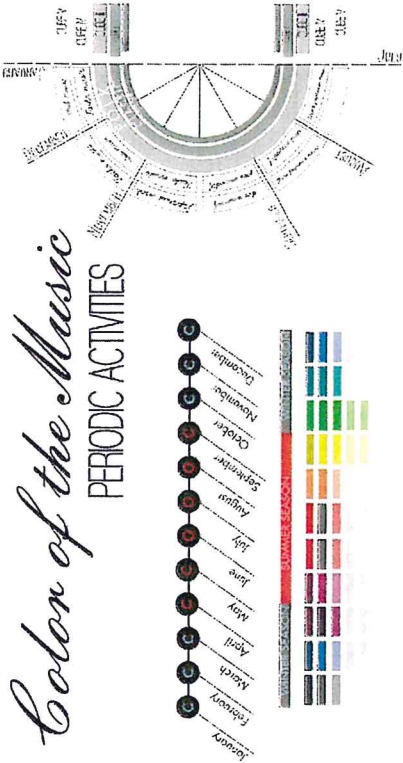
The Music of the Instruments in Kawagoe Festival

The typical crunch of Candies & Pastries in Kawagoe

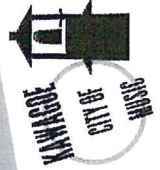
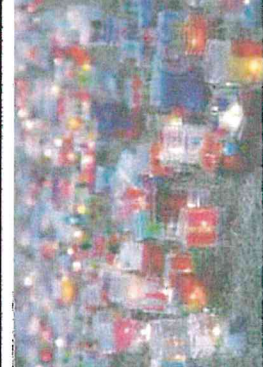
The hiss of the Furin in Hikawa Shrine

Color of the Music

PERIODIC ACTIVITIES



Waste management is a key part of the circular economy. It involves collecting, separating, and recycling waste to reduce environmental impact.



MELODY

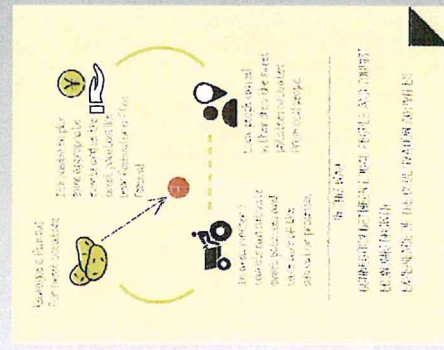
Our Cluster Strategy is to detect some important insights and try to improve their system not by through daily activities but also during the evening and the night in order to make all knowledge take advantage to the evening day. The experiments to create a functional category of activities, which are necessary for the public infrastructure, are as follows:

At the same time, we will try to improve the system by using the night time. The main idea is to create a functional category of activities, which are necessary for the public infrastructure, are as follows:

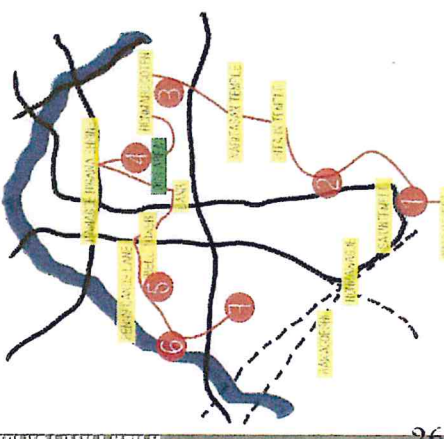
At the same time, we will try to improve the system by using the night time. The main idea is to create a functional category of activities, which are necessary for the public infrastructure, are as follows:

CLUSTER

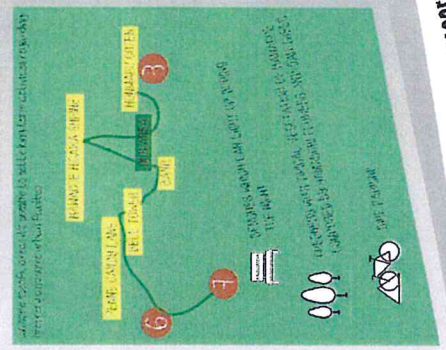
LONG TERM ACTIVITIES



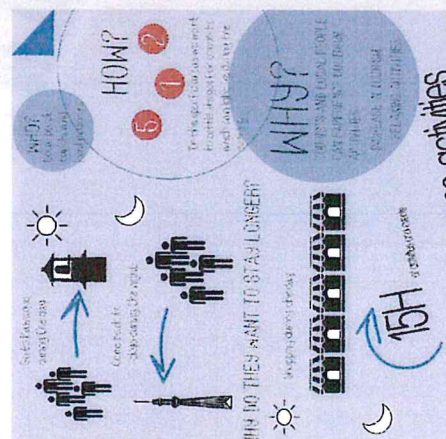
PERIODIC ACTIVITIES



PERIODIC ACTIVITIES



PERIODIC ACTIVITIES



during the night some activities

HARMONY

The graphic features the word 'HARMONY' in a large, bold font. Below it are several circular icons, each with a different color and design, representing various activities or concepts. The background is a textured, greyish surface.

TOURISTS
SOUVENIR
Events

Fire
ROOF
WOODEN

TRADITION

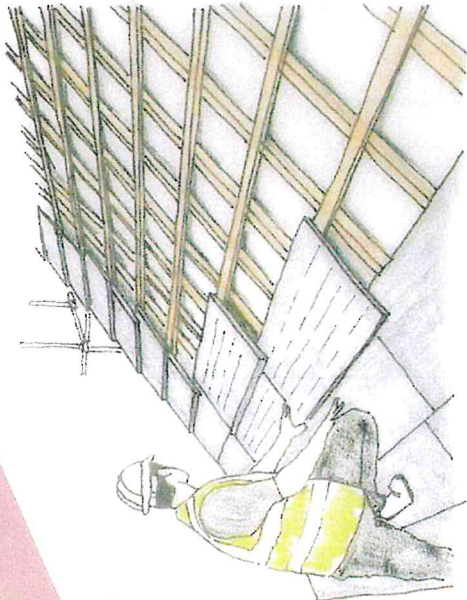
Historical Layers
SMALL EDO

It's not that one of the most important elements of Japanese architecture and of the Japanese landscape in general was the rice field. Rice fields and rice fields were the main food source for the population.

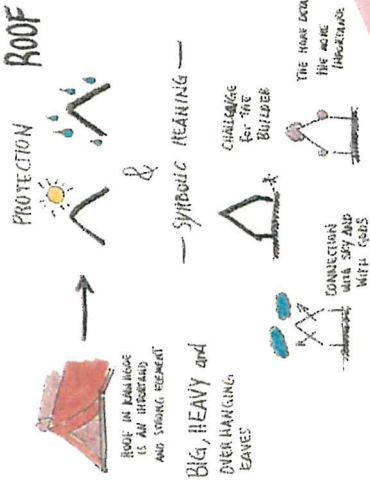
THE ROOF "COVER" COVER JUST AN INTERESTING SOURCE BUT IT IS ALSO ECOLOGICAL AND SYMBOLICAL MEANING

This is the main reason we had to work on the design of the use

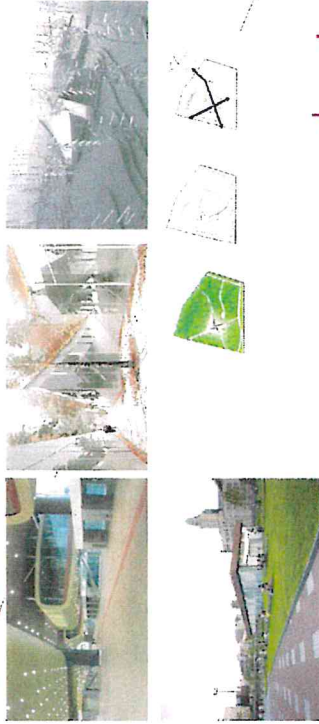
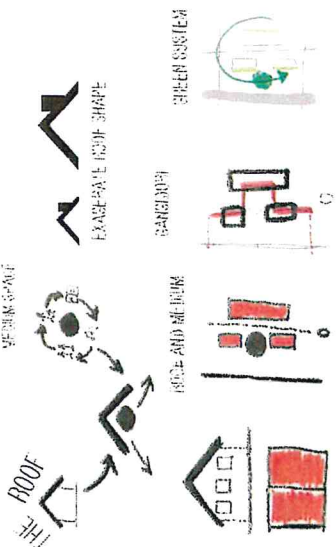
SOLAR PANEL



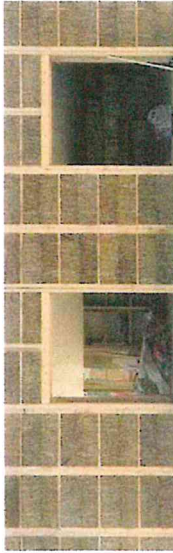
MEDIUM



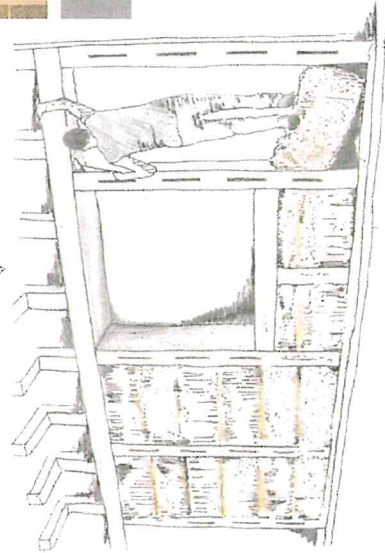
OUR IDEA



wooden structure



CONCEPT



INNOVATION



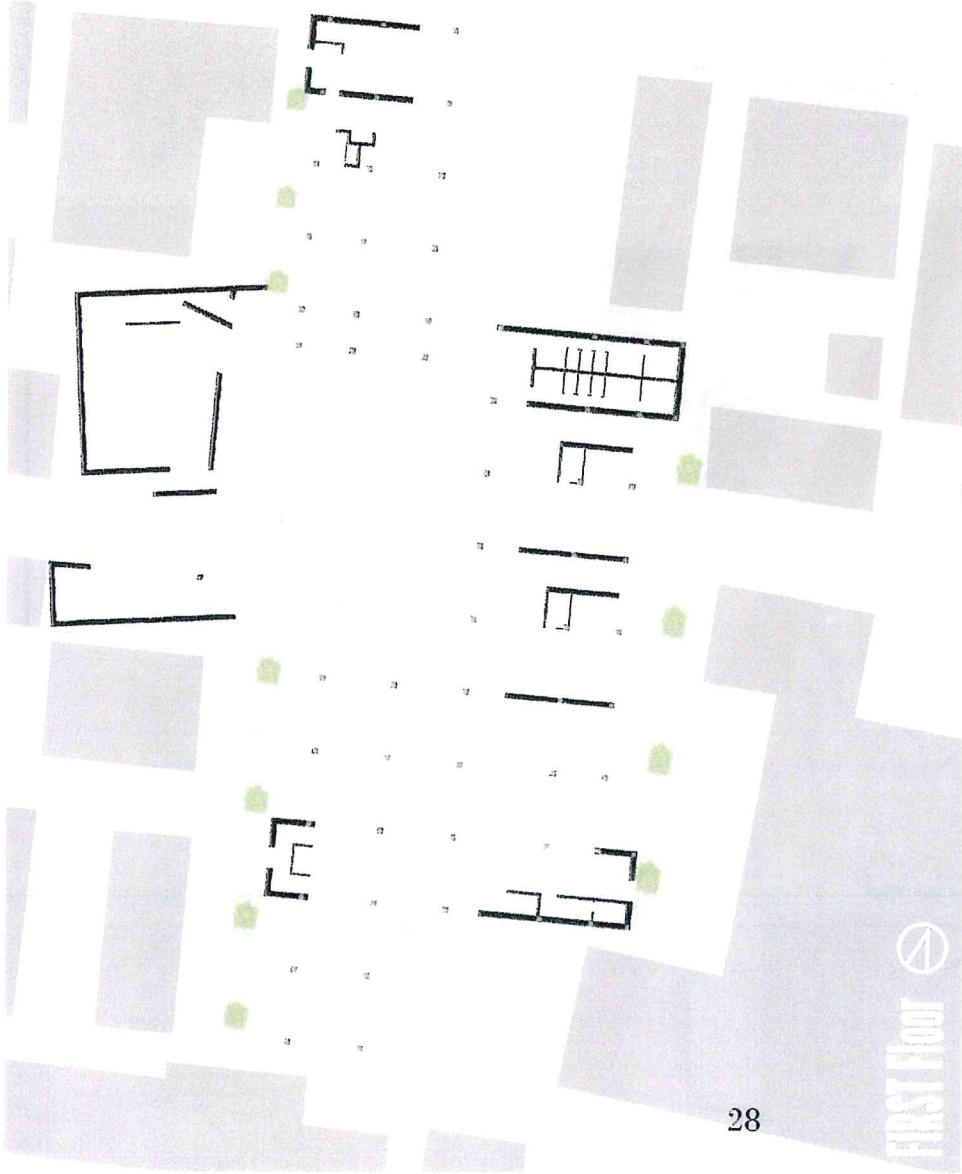
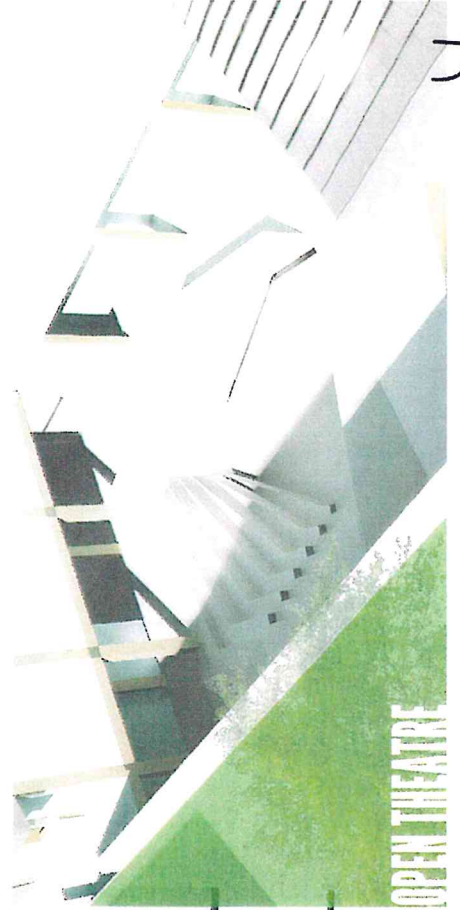
North ELEVATION



Est ELEVATION

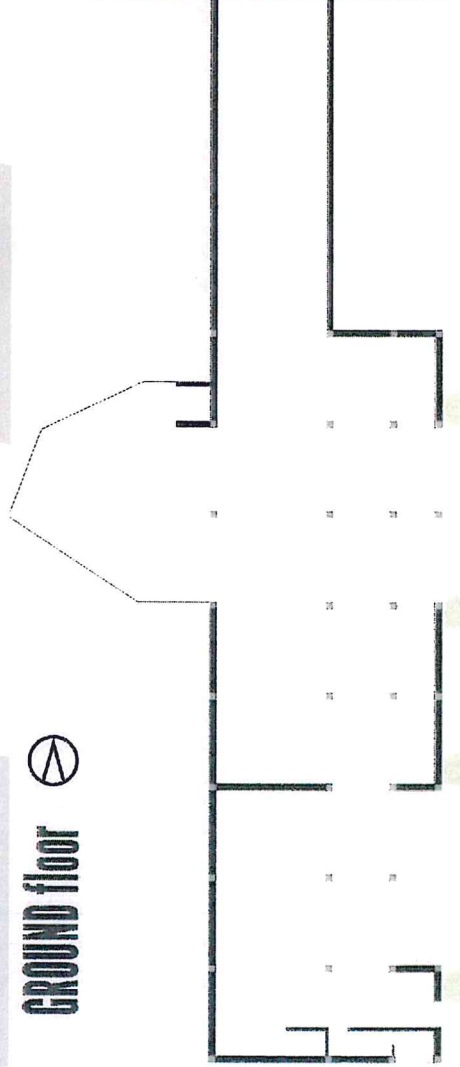


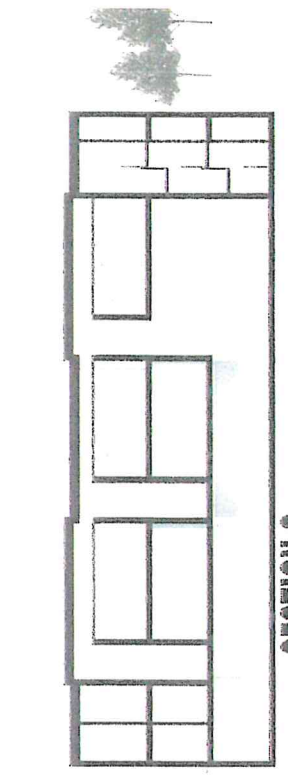
South ELEVATION



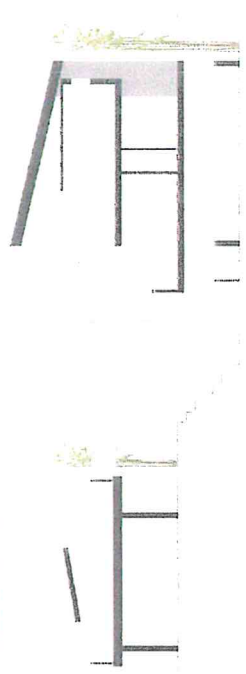
FIRST Floor

GROUND floor

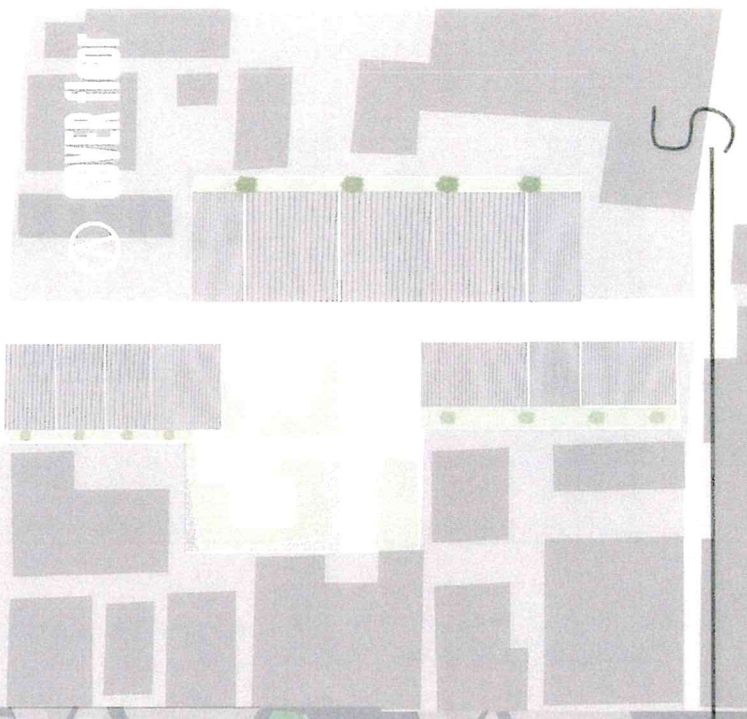




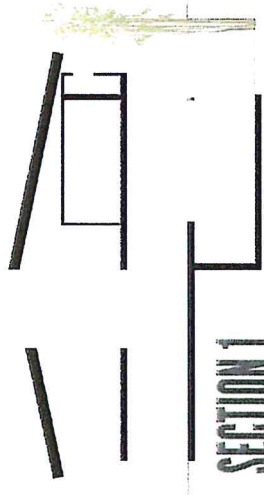
SECTION 2



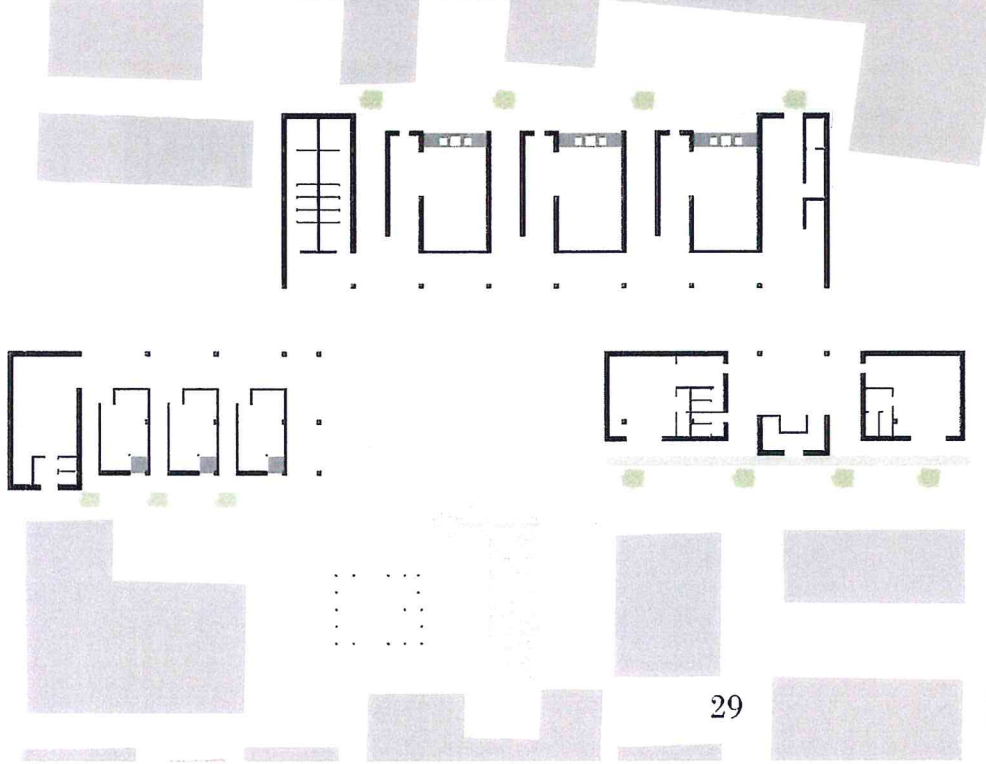
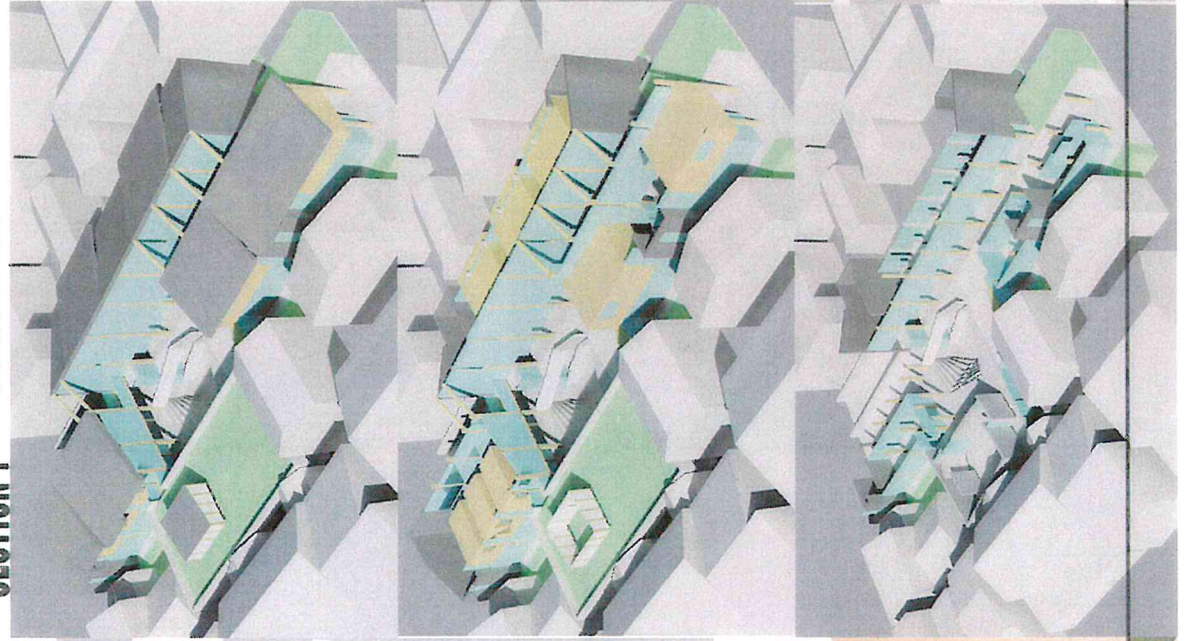
SECTION 3



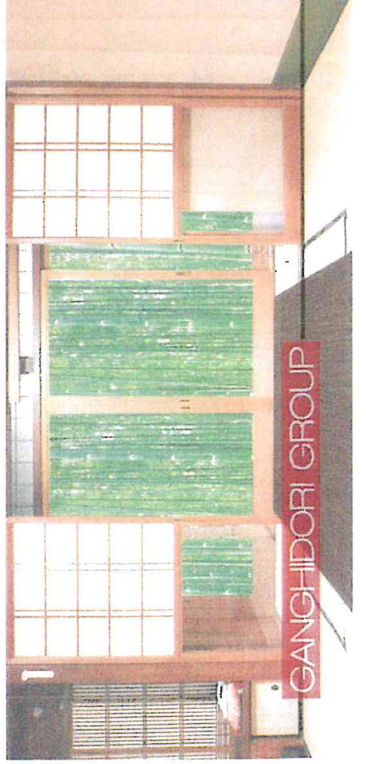
COVER FLOOR



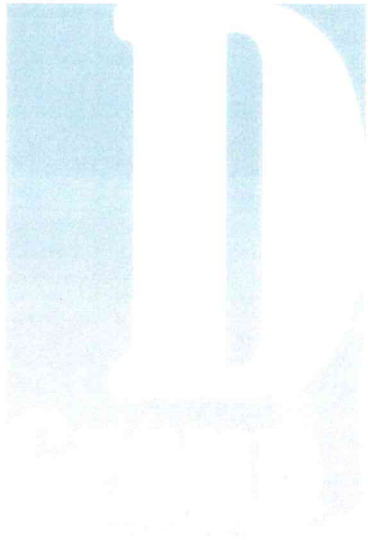
SECTION 1



RYOKAN FLOOR



GANGHIDORI GROUP



Connect and Divides

NII ARCHITECTURAL INTERNATIONAL
WORKSHOP IN TOKYO:
BUILDING A HOTEL FOR LONG-TERM STAYS
IN THE HISTORICAL AREA OF KAWAGOE



DEBORA D'ONOFRIO



PAOLO DI MARZIO



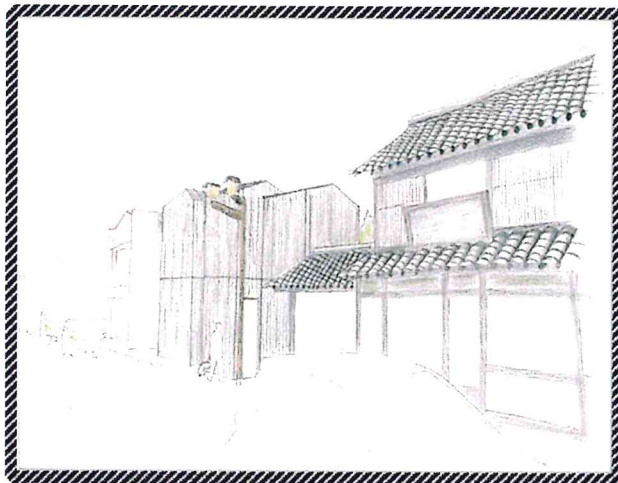
KEN NISHIMARU



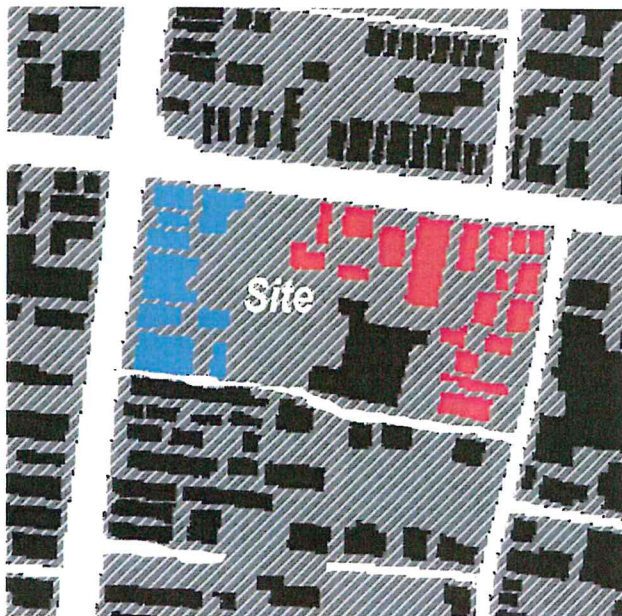
MAKIKO TANAKA



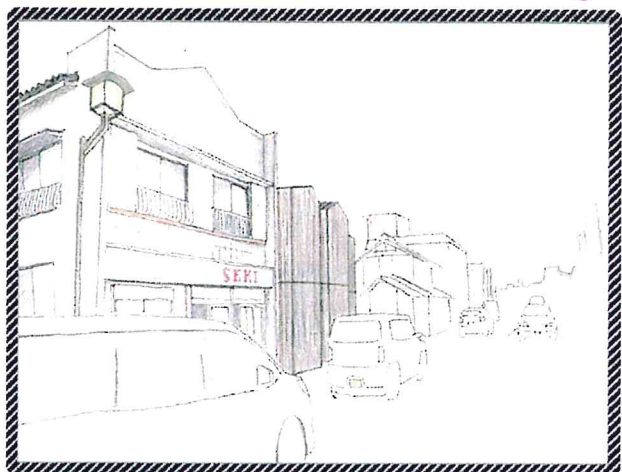
MAY SASAKI



Historic buildings



Modern buildings



This basic site is located between the area of historic buildings and the area of modern buildings.

We thought that connected these two areas where we disagreed with by this site.

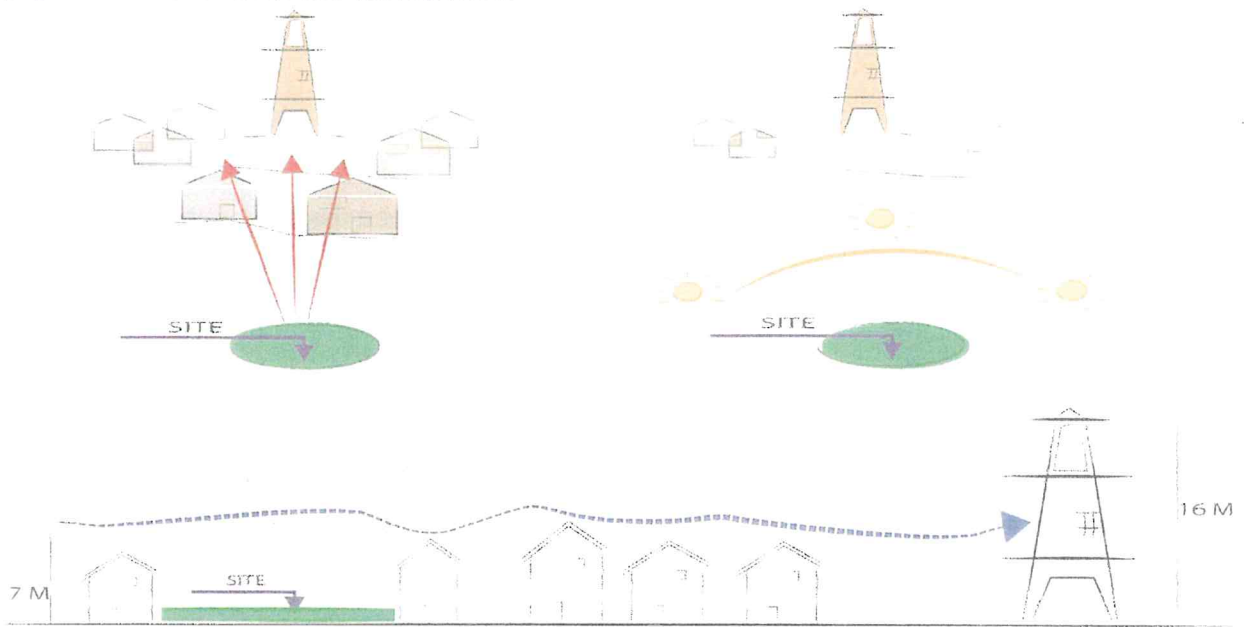
However, we must think about the safety. A public place is made in this site. We thought about keeping these two functions...

- .To make the public place that is available to anyone.

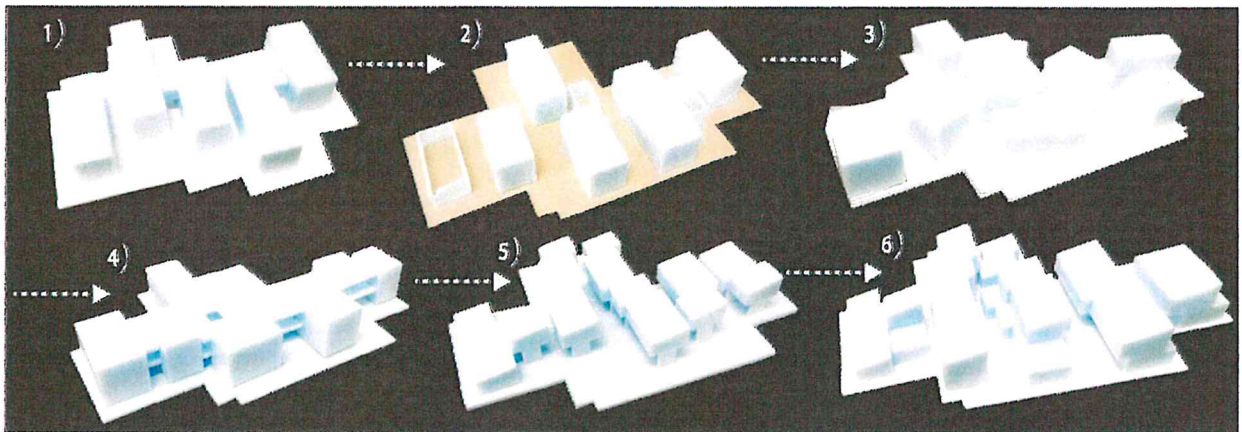
- To keep tha private and the security of the hotel guest.

Based on the above-mentioned thing, we designed the hotel for long-term stays in the historical area of Kawagoe.

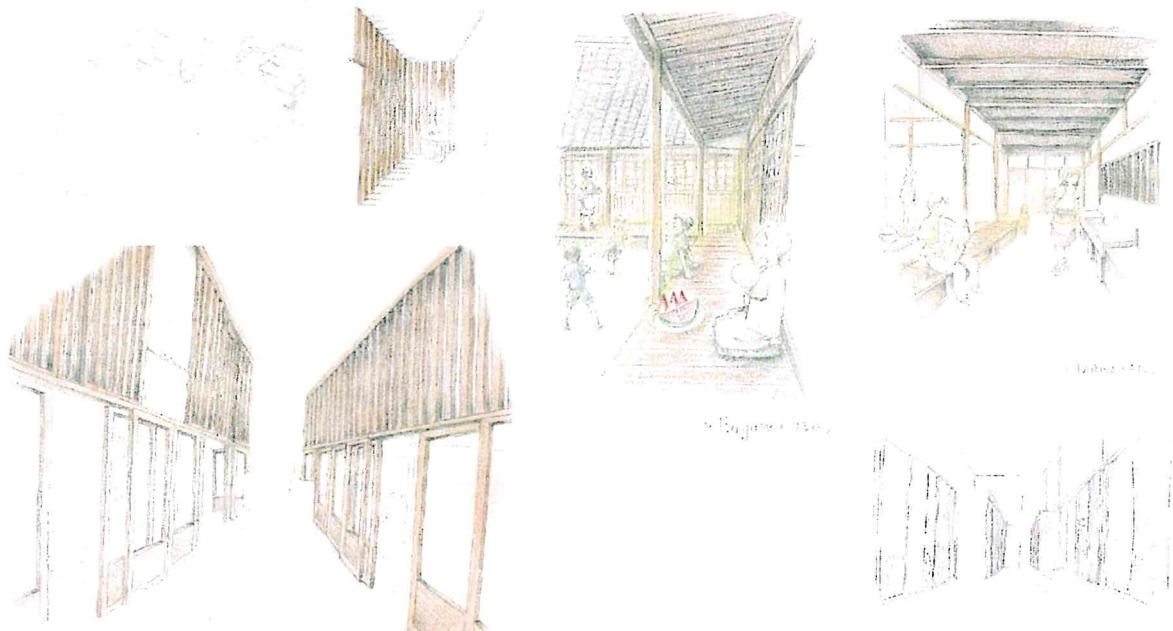
►► The visual and the orientation

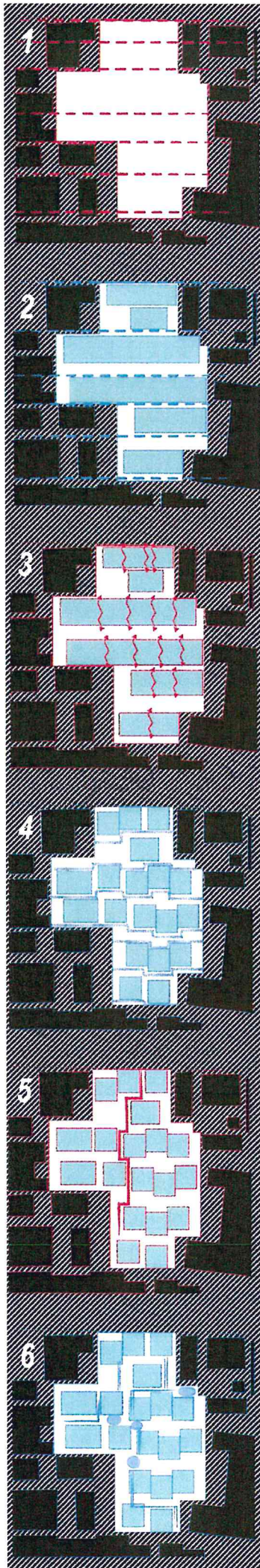


►► The development models



►► Perspective image





CONCEPT

1. The concept takes shape by morphology of the area, which, according to orthogonal lines, invites to follow the features of the ancient form.

2. The idea is to create uniform system that run along direction given from the context.

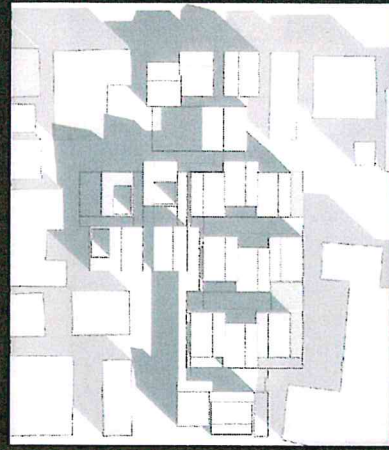
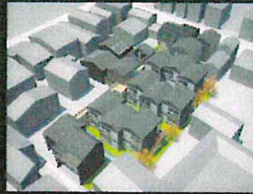
3. The concept continues with movement forms of the buildings, to create dynamism and sinuous lines.

4. The movement of volumes create a game that allows a system permeable without occlusion of the space.

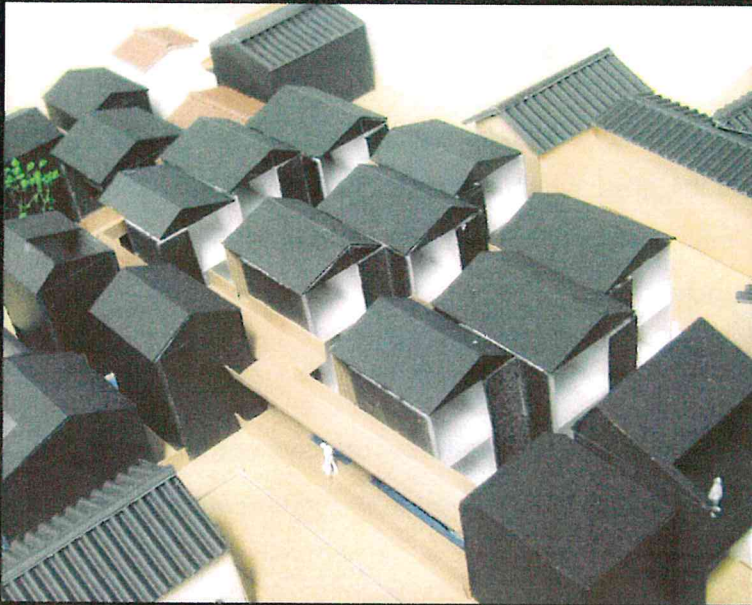
5. The central course divides a site into the public place and private area. This path is not static but dynamic, which is part of the system built.

6. The game between the volumes is given by natural elements as water and green space which defining the routes.

Group D



↑ Volumetric

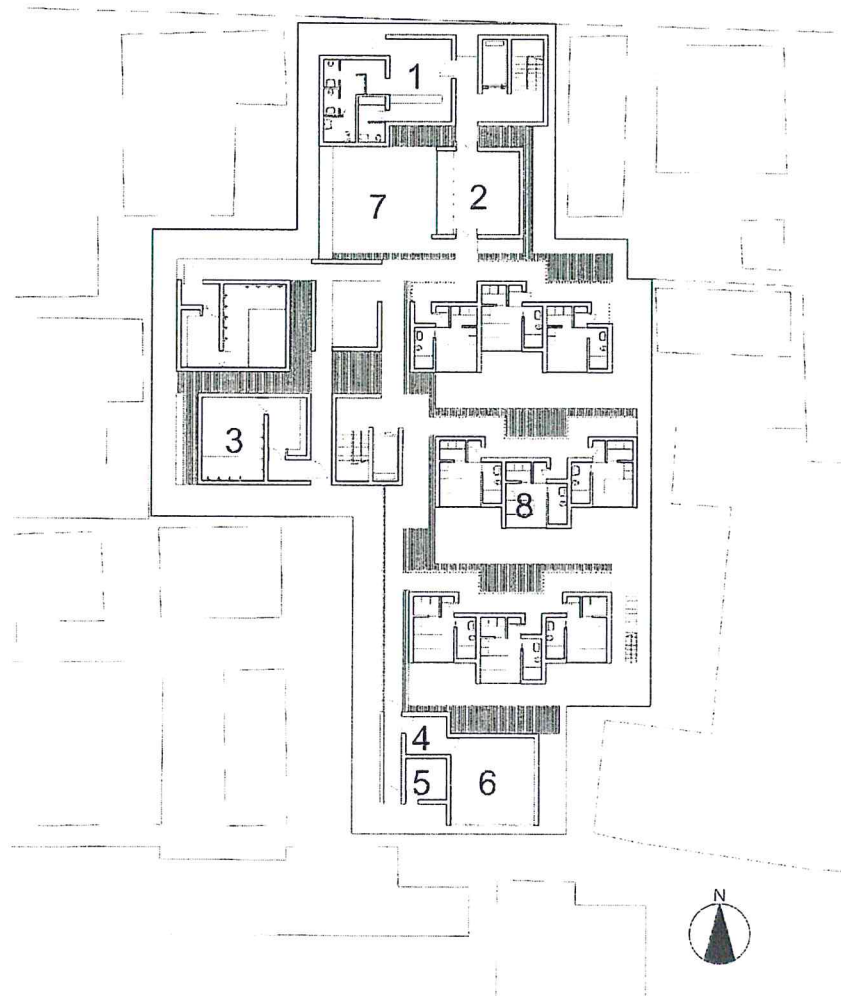


PLAN

at first floor

1/500

- 1.reception
- 2.lounge
- 3.onsen
- 4.disengagement
- 5.trash area
- 6.garage
- 7.courtyard
- 8.hotel room





PLAN

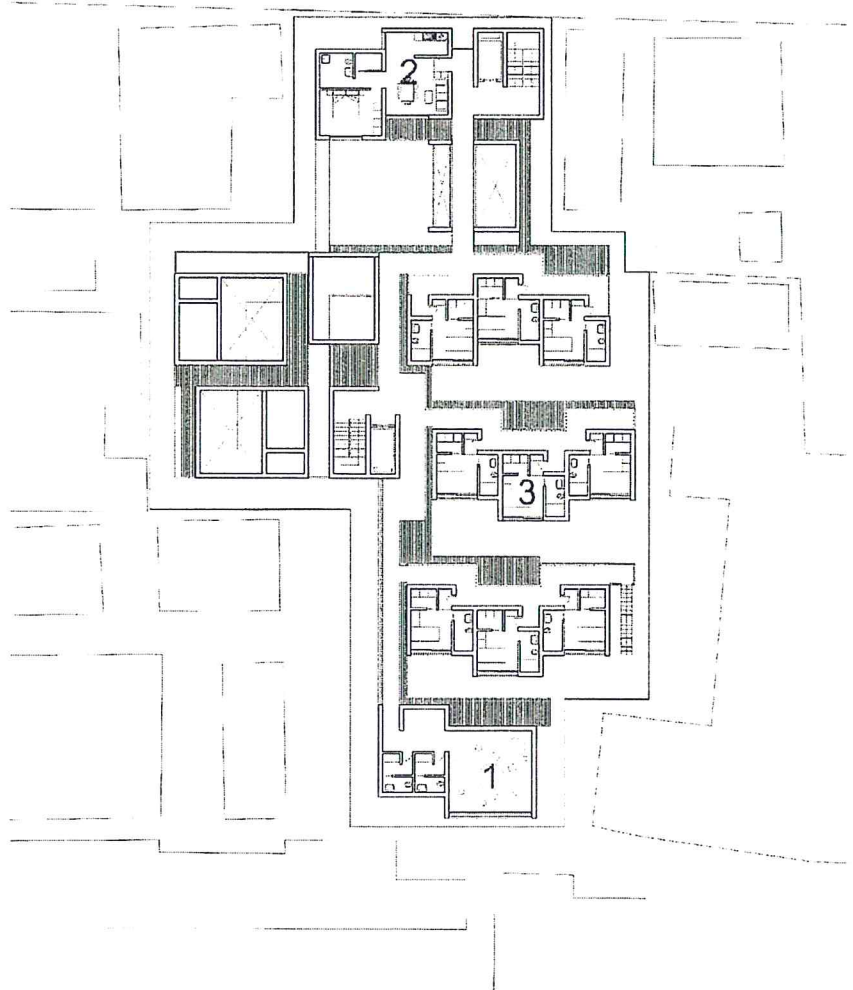
at second floor

1/500

1. lounge looking
at the tower

2. hotel room
for the family

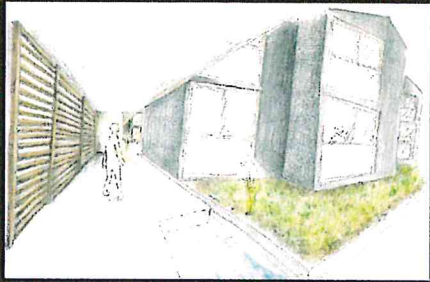
3. hotel room



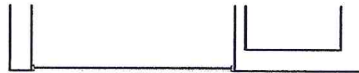
Group D



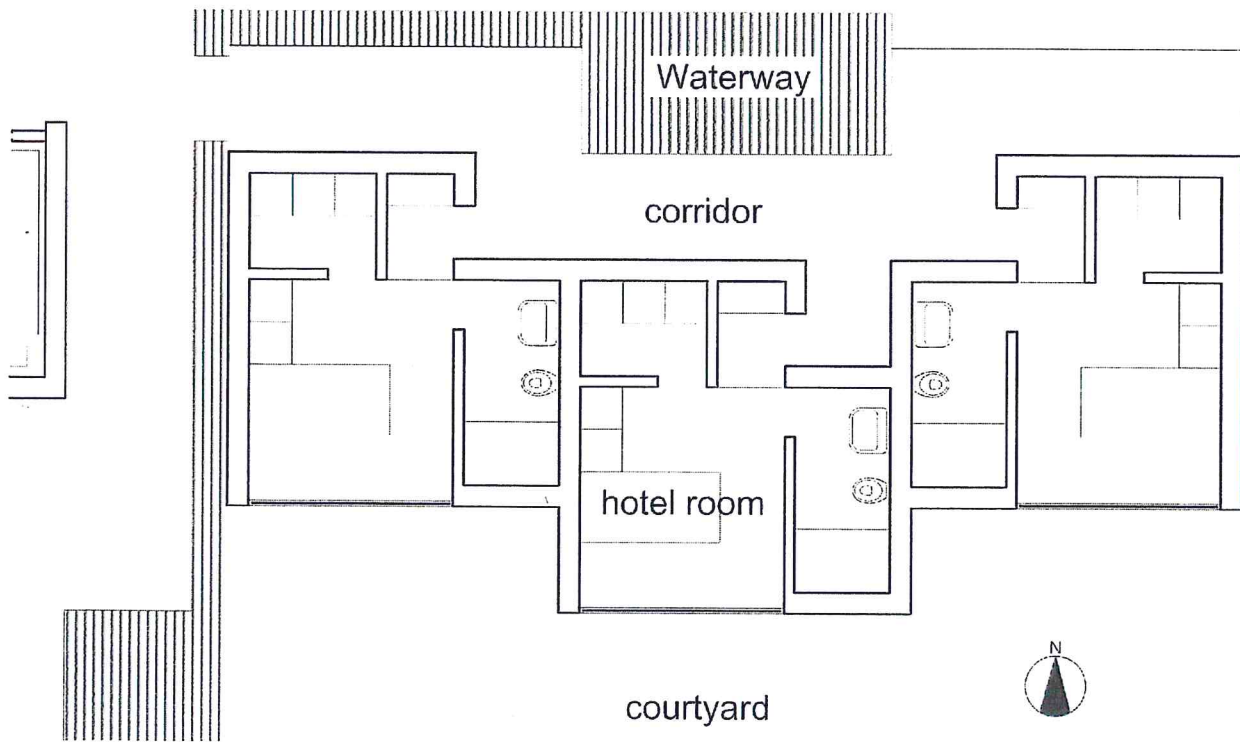
Security line

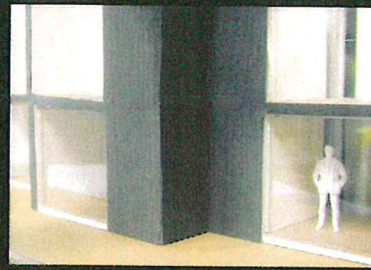


PLAN
at first floor
1/200



courtyard

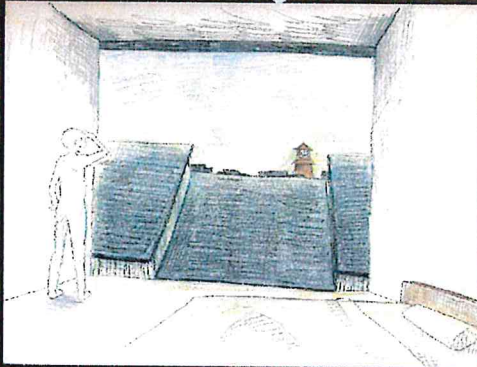




lounge

looking at the courtyard

looking at the tower



Security line

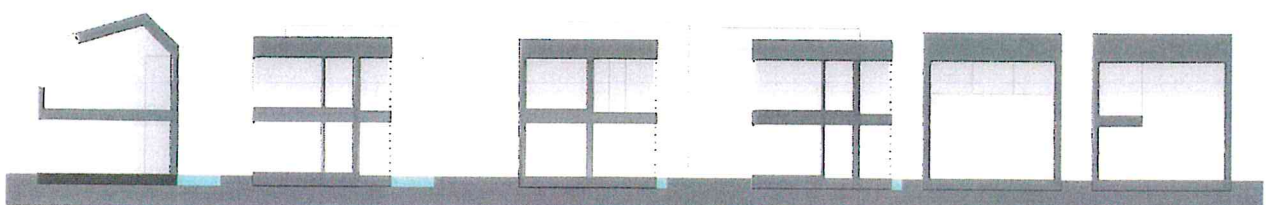
Onsen (a hot spring) is the public place that is available to even the people who do not stay at the hotel. Therefore we must think about the security of a person staying at the hotel.

Waterways and corridors are "security lines" separating the public place and the place of the private.

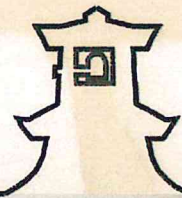
The lounge is two places in the south side and the north side. There is the lounge of the south side in the good place of the view of the second floor. We can watch the symbol tower "Toki no kane" of Kawagoe from there.

We can look at a courtyard from the lounge of the north side. The hotel user watches nature and spends relaxed time.

lounge



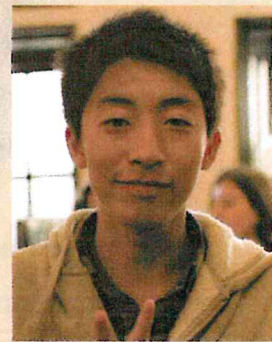
E GROUP



ILARIA DI PANCRAZIO



KOHARU ONO



RYOSUKE TOYAMA



SARA MUCCI

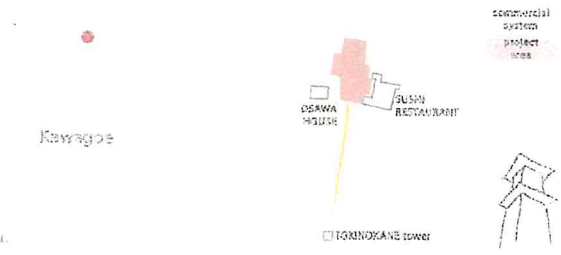


RYU MATSUZAKA

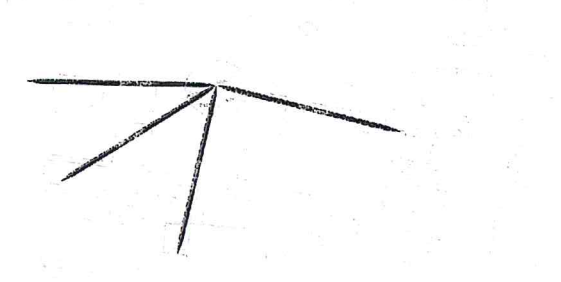
ANALYSIS

5 periods of construction

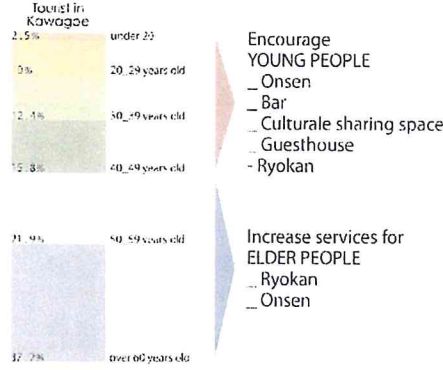
| PERIOD | MEIJI | TAISHO | SHOWA | HEISEI |
|-----------|-----------|-----------|-----------|--------|
| 1868-1912 | 1868-1912 | 1912-1926 | 1926-1989 | 1989- |



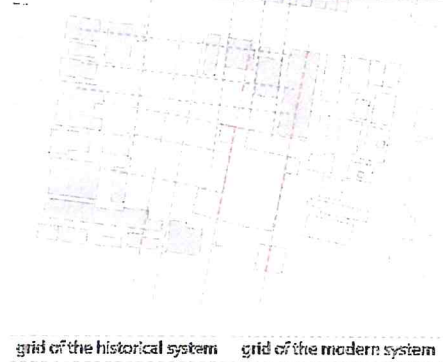
Tokinokane Tower
the Bell rings 4 times
in one day



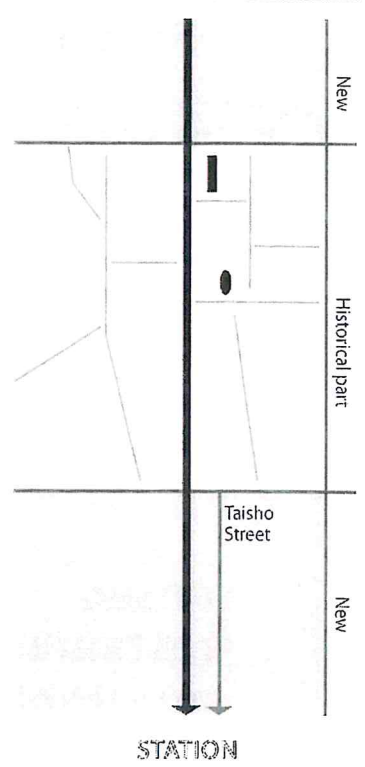
Guests



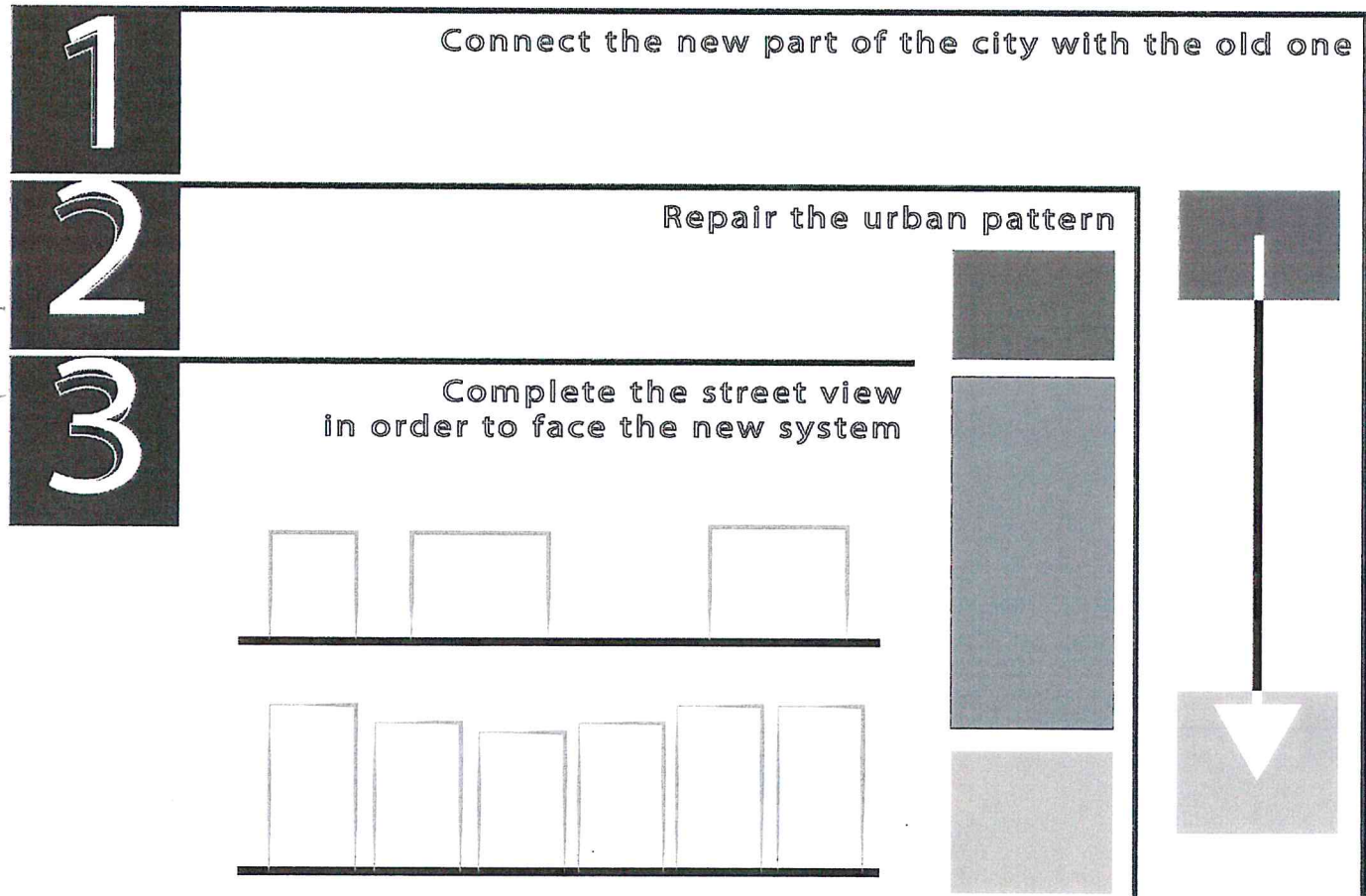
Grids



Connections



CONCEPT_REPAIR



STRATEGY

FACILITY

TIME

OPERATIONS

PUBLIC!

- bar

NEW!

- grid from new side
- material: concrete

Analysis of the main directions

SURFACE ↙

COMMON

onsen
restaurant
guesthouse

- two mixed grid
- material: mixed

Rift of the main system

SURFACE ↙

PRIVATE

- Ryokan

TRADITIONAL

- grid from Tokinokane Tower
- traditional elements from japanese culture
- material: wood

Strong connection with outside through a SURFACE that drives us inside the area.

Functional division

VOLUME ↙
SURFACE ↙

Definition of the main volumes (public and private)

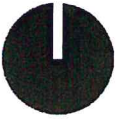
NORTH FRONT

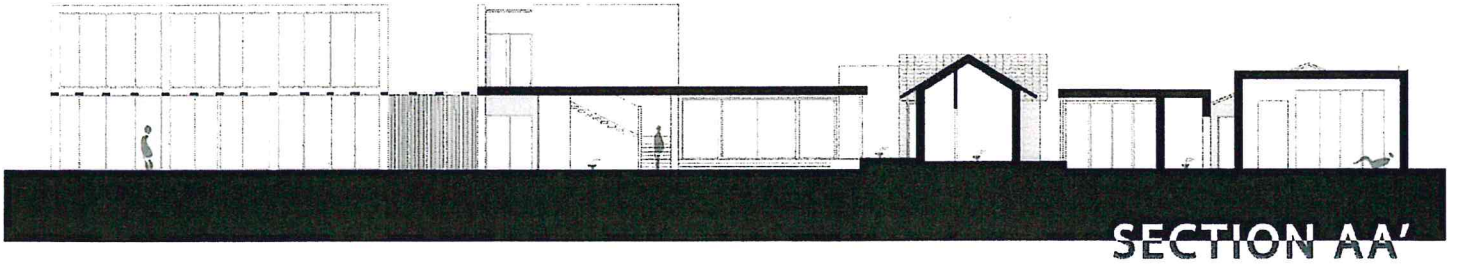
Break of the main private spaces.

E

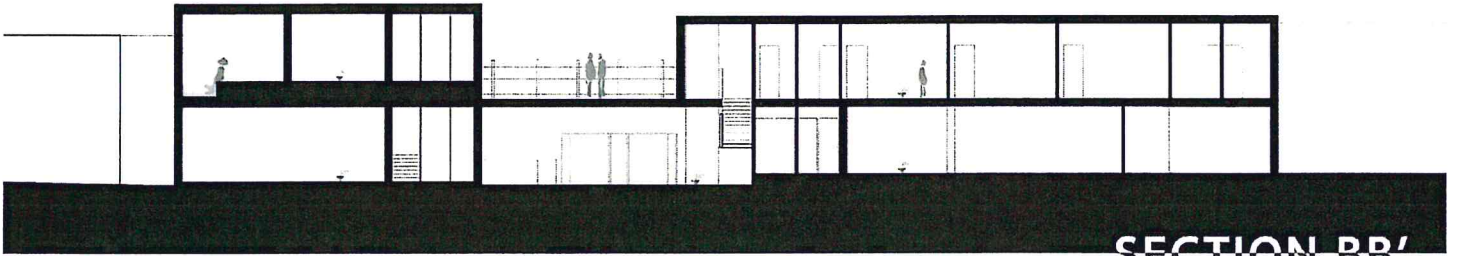
group

Groudfloor plan, scale 1:100

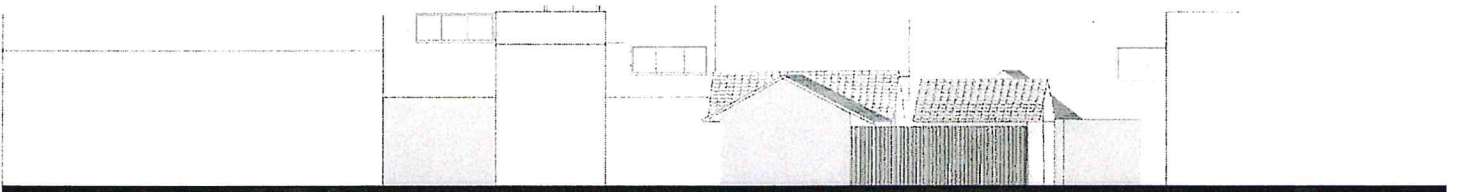




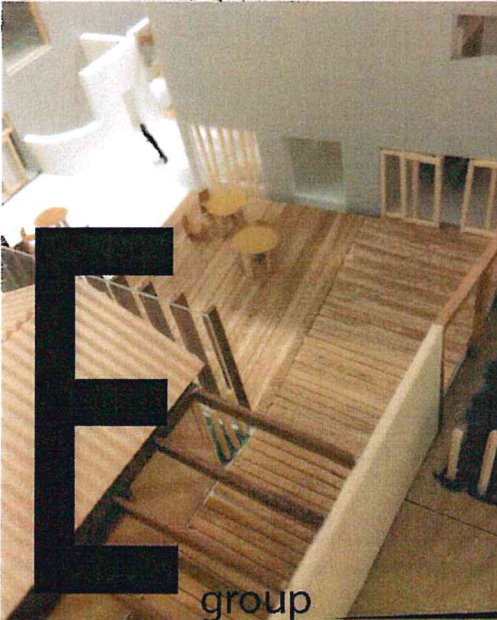
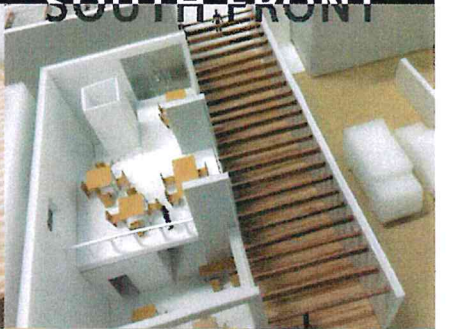
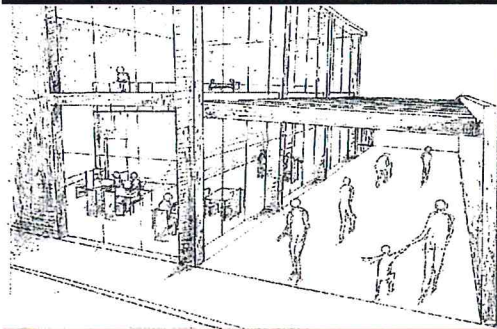
SECTION AA'



SECTION BB'



SOUTH FRONT



E group





REVIEW

FOR L'AQUILA-SIT WORKSHOP 2016

■Yoko Ito

The L'Aquila-SIT workshop with excellent teachers and cheerful students is an unobtainable way to share different opinions, approaches, and methods, especially from the SIT side.

This time, the topic was "Building A Hotel for long-term stays in the historical area of Kawagoe". I could have a good chance to introduce this attractive city to the participants with approval of my acquaintances in the city. Kawagoe, including its historical area, seemed to stimulate the students' desire to work together, while it was not so easy to build up each concept and to find their final conclusion. Moreover, the building site was a kind of 'hinterland', which means it was an irregular-shaped site behind the historical area.

However, our students were very eager to have a severe discussion and elaboration of their work, and then they could reach the final conclusion. I appreciate all the efforts they had, and believe this experience raised their young spirits to a certain height during the one month.

It is a great pleasure to express my deep gratitude to my Italian colleagues, my friends in Kawagoe, Prof.Ouchi, Mr.Nezu , all the stuffs and students. In the coming year, I can meet the Italian professors again in Italy!

■Hirosuke Sato

For most of the Italian students, this workshop was their first trip to Japan. We first visited Kyoto and learned the Japanese traditional architectural style. After coming back to Tokyo, the students discussed on the topic “Building a hotel for long-term stays in the historical area of Kawagoe”

I was very curious about how the Italian students will feel about the Japanese traditional architectural style, and how they will interpret the city and develop their project.

Each project proposed by the students had respect for the traditional architectural style and the historical environment. At the same time, not only did they follow the historical style, but each project had innovative ideas. I think each group experienced notable discussion about tradition and innovation.

In the field of urban design, we usually say that “Outsiders” are important for residents to find the strength of their neighborhood. In the global society, I think it was significant that the students from different countries collaborated and discovered different ways of looking at tradition and innovation.

I hope this workshop will be a significant experience for the students when working in the international architectural field in the future.

■Yoshio Sakurai

First of all, I am so grateful to participate in the workshop SITxULA from the first time arriving to Kawagoe. The event is already making a history of the friendship and collaboration that is definitely the rare and precious international relationship.

Kawagoe is particularly characteristic city in Kanto area, with the basis of historical real rests and other adjoined later elements which follow the historical taste. The city has its own strong image that appeals the originality of urban space and complexity of territorial area. So our project should express the understanding about the characters of urban space of Kawagoe and the reality of the city form. All the existing objects are historical, including recent modifications of detailed part of the city. It could be hard to distinguish modern element or historical rests in this situation. Respect for the existing space and creation of the new space that will integrate the image of Kawagoe would be the way to make a proposal appropriate and persuasive.

For Japanese students, this is the case in which they can learn much from Italian students and I hope that the results offer a both students the maximum satisfaction and make them together with a passionate and profound friendship.

■ Aldo Benedetti

I took part as an Italian professor in SIT-ULA bilateral workshop held in Tokyo from 2016 February 17th to March 17th.

My evaluation about 2016 workshop is really positive. It founds on the previous well tested experiences, the good appreciations of the Italian students, the ever interesting project issues, the passionate involvement of the Japanese colleagues who strengthened the relationship with us year by year.

The program topics were related to the common interests of the Japanese and Italian professors in the research fields as well in the didactic ones according the way of developing our bilateral agreement.

The Kawagoe central area project represented an excellent test for the students. They developed projects reflecting the contemporary directions of architectural and urban design according the different cultural visions of our two countries.

I wish to underline the role of the Japanese professors in fostering the common interests about the transformation-conservation debate in the historical settlements and in urban areas. Particularly prof. Yoko Ito was a strong leader of the workshop and she gave fine lectures about the cultural heritage. Prof. Hirosuke Sato showed interesting suggestions for the urban project.

I'd like to thank so much the continuous collaboration of prof. Yoshio Sakurai not only for his expertise in the design process but as the far connection to this workshop's origin.

Last but not the least I was delighted for the visits prof. Hiroshi Ouchi during our stay.

Even though he retired, he has a strong relationship with us and we can learn a lot from his deep experience.

■R. Continenza

A new awareness of the environmental issues and the climate change urges to reflect upon human settlement project, aiming to avoid the land consumption and to reduce the impact of human presence in the ecosystem. It gathers a thorough reconsideration of the intervention on the urban space, highlighting the rediscovery of the values of historical contexts and the compatibility between them and contemporary design. Among other aspects of this problem, as opposed to the exaltation of the individualistic dimension in architecture, stands out the willingness to reconsider the choral dimension of the city, formal expression of shared values, and its evolution through the time.

These are the research topics that the SIT and ULA teachers have chosen to propose as the theme of the joint architecture workshop project. The substantial sharing of the common objectives, did not hide the, sometimes deep, cultural differences in the approach to such a sensitive issue but instead has encouraged a fruitful and continuous debate that continues till now, after more than ten years, gives both partners valuable ways to widen reflections.

The theme proposed as project experience in the 2016 workshop requested a deep study on Kawagoe, a very special city, characterized by very special and original typological features.

The enthusiasm and the great inventive and creative strength of the students has led to a wide range of solutions and, considering the limited working time, with a satisfactory level of detail .

In all cases , although with different variations , the response to the issue favored the opening of the urban plot and its integration with the surrounding urban fabric. It started from the creation of an internal processional route (to host the Dashi -group B) to a more internal road opened on meeting spaces (as group C –Gangidori-), dominated, as in the group A project by a series of private spaces, all overlooking to the Kawagoe castle tower. Against a rigid rectilinear layout (groups A and C) was also opposite a more curvy path that creeps over the interstitial spaces between the old and the new fabric (Group D), while the dynamic intersection of geometries in the group C project echoes to the crossing of the local, different, urban textures.

The experience wouldn't be complete without significant insights aimed to clarify the linguistic aspects of architecture or the recovery, in a contemporary way, of some languages coming from the tradition.

Memories



■ Kawagoe City Office

川越市役所

■ NPO Kawagoe Kura No Kai

特定非営利活動法人 川越蔵の会

Shinji Shiratsuchi 白土真二さん

Yasuhiro Matsumoto 松本康弘さん

Mieko Matsumoto 松本美恵子さん

Masahiro Koizumi (Monzouan Representative Director)

小泉昌弘さん (紋蔵庵代表取締役)

■ Taito ward office The urban development part
Construction Section

台東区役所 都市づくり部 建築課

Yoichi Nezu 根津洋一さん

■ Men who participated in Exchange program
and Motoki Kawabe



SPECIAL THANKS



UNIVERSITY
OF L'AQUILA



SHIBAURA INSTITUTE
OF TECHNOLOGY

発行

芝浦工業大学

東京都江東区豊洲3-7-5